

FAMOS IR LED CAMERA

ORL0171620

Camera FAMOS IR LED 118° NTSC

- Shock and vibration-proof, 100% waterproof, for all weather conditions
- Camera is potted with polyurethane elastomer
- Temperature range -40 °C...+85 °C

**PRODUCT DESCRIPTION**

The Orlaco FAMOS IR LED Camera is a sturdy, compact camera with night vision, which can be used in almost every vision solution on machines, vehicles and vessels. The camera has four integrated High Power infrared LEDs, which enable the camera to reach a night vision distance of 25 meters. In addition, the camera is shock and vibration-proof, 100% waterproof, detects 'frozen' images with the safety ticker, has heated lens glass and provides the best possible image in all weather conditions.

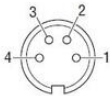
Technical specifications

- Input voltage 12...24V/DC
- Connector Orlaco 4-pins male (with the exception of the 0171680 & 0171690)
- Cable 0,5m multi cable
- Light sensitivity <0,05lux
- Vibration resistance 50G
- Protection class Watertight IP68 & IP69K
- Operating temperature -40°C to +85°C
- Housing High impact automotive synthetic thermoplastic polymer
- Dimensions ø55mm
- Weight 0,21kg

SPECIFICATIONS

Cable length	500 mm
Camera Angle	118
Image Format	NTSC
IP Class	IP68, IP69K
Material	ABS plastic, PC
Supply Voltage DC Max	24 V DC
Supply Voltage DC Min	12 V DC

Temperature range from	-40 °C
Temperature range to	85 °C
Vibration Resistance	50G



Electrical connections
Front side of molded 4p male connector

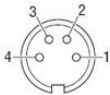
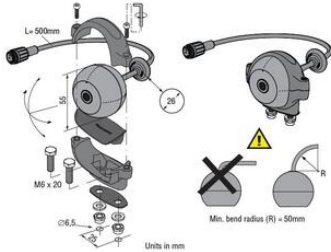
1 = Coax core	= Video signal
2 = Coax screen	= Video GND
3 = Red	= 12...24V/DC
4 = Black/orange	= 0V
Shielding	To connector housing



Electrical connections
Front side of M16 molded 7p male connector

1 = Coax core	= Video signal	5 = Orange	= IR LED off, when connected to power.
2 = Coax Shield	= Video shield	6	= not connected
3 = Red	= Power	7	= not connected
4 = Black	= Power GND	Overall shield	to housing.

Dimensions



Electrical connections
Front side of molded 4p male connector

1 = Coax core	= Video signal
2 = Coax screen	= Video GND
3 = Red	= 12...24V/DC
4 = Black/orange	= 0V
Shielding	To connector housing



Electrical connections
Front side of M16 molded 7p male connector

1 = Coax core	= Video signal	5 = Orange	= IR LED off, when connected to power.
2 = Coax Shield	= Video shield	6	= not connected
3 = Red	= Power	7	= not connected
4 = Black	= Power GND	Overall shield	to housing.

Dimensions

