

## ORLACO - FAMOS

ORL0171210

CAMERA FAMOS 118 PAL MIRROR

- Robust construction for extreme environments
- 12 or 24 V DC
- operating temperature -40 to +85 °C
- Epoxy-filled, better protection against moisture



### PRODUCT DESCRIPTION

These cameras are available in several different viewing angles to suit the various applications they can be used in. For example, if you want to see details in a long way, choose a narrower opening angle and instead you want a cross-section view, choose a further opening angle. Orlaco cameras are suitable for all types of vehicles, regardless of whether you need a power camera, back camera or side camera.

Orlaco's new FAMOS camera is not gas-filled as the traditional clover camera has been before, but it's epoxy-filled instead. This has provided better protection against moisture.

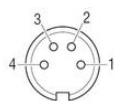
### SPECIFICATIONS

Camera Angle	118
Image Format	PAL
IP Class	IP68, IP69K
Supply Voltage DC Max	24 V DC
Supply Voltage DC Min	12 V DC

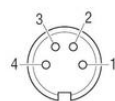
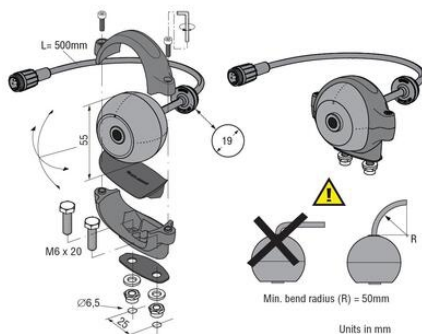
Temperature range from -40 °C

Temperature range to 85 °C

Vibration Resistance 50G



**Electrical connections**  
**Front side of molded 4p male connector**  
1 = Coax core = Video signal  
2 = Coax screen = Video GND  
3 = Red = 12...24V/DC  
4 = Black/orange = 0V  
Shielding To connector housing



**Electrical connections**  
**Front side of molded 4p male connector**  
1 = Coax core = Video signal  
2 = Coax screen = Video GND  
3 = Red = 12...24V/DC  
4 = Black/orange = 0V  
Shielding To connector housing

