

TAKEX - G SERIES COMPACT PHOTOELECTRIC SENSOR

GT5RS-PNP-N
PHOTOSENSOR MIDI G T/B EAM PNP

- Compact one-piece photoelectric sensor
- Cable or connector
- Alarm output
- IP67



PRODUCT DESCRIPTION

Compact one-piece photoelectric sensor to fit narrow machines. If detection to a reflector is required, GMR2RS it a natural first choice. A polarised lens eliminates any ghost reflections. The "protective casing with bracket" accessory permits very robust and secure fitting. A separate alarm output is provided as additional security.

SPECIFICATIONS

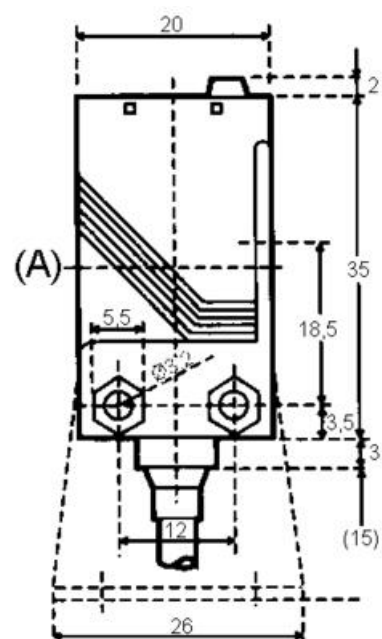
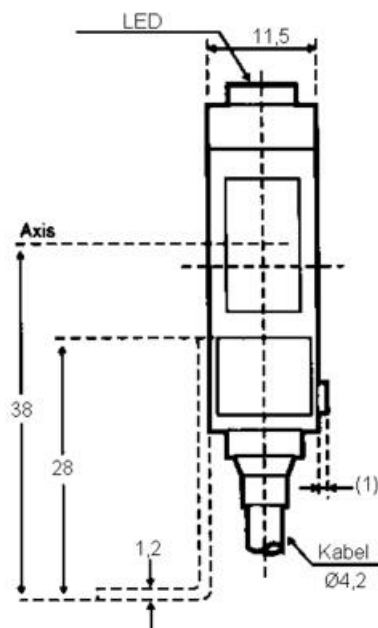
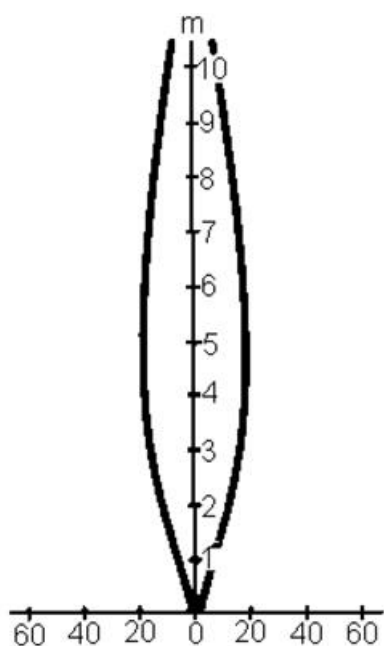
Approvals	CE
Distance Min	0 mm
Electrical connection	Cable 2 m
Function	Dark On/Light On
IP Class	IP67
Light / Dark Switching	Yes
Light type	Red LED
Output	PNP
Photocell technology	Transmitter / receiver
Power consumption max	0.025 A
Reaction time	0.5 ms
Sensing	7000 mm
Temperature range from	-25 °C
Temperature range to	55 °C

Voltage DC max

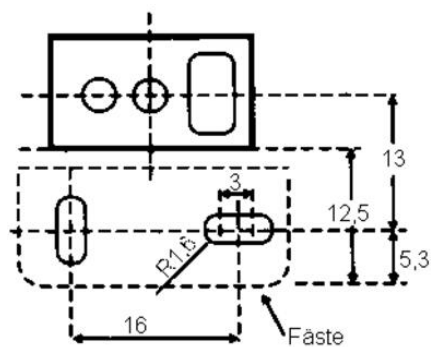
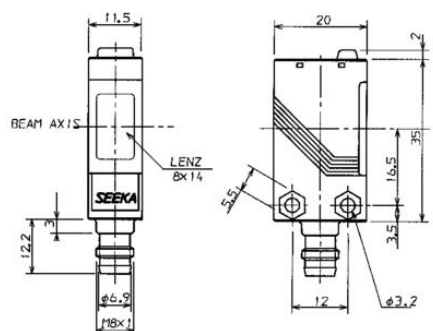
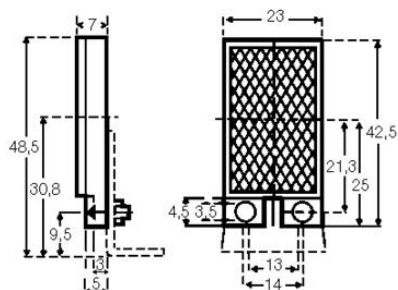
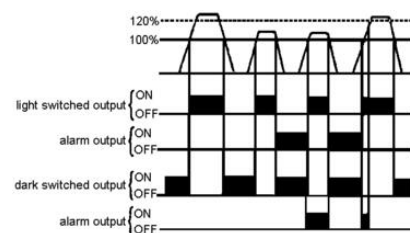
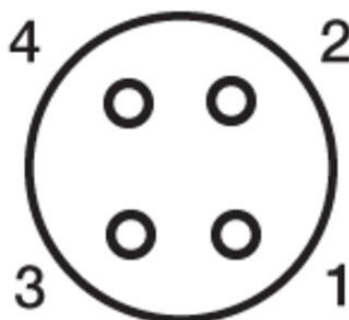
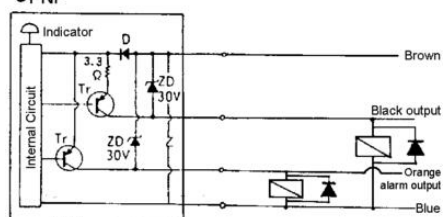
24 V

Voltage DC min

12 V



●PNP



●PNP

