

## SAFETY SWITCH SLK

391.1702.228

A1 KPL ACTUATOR

- Mechanical or electronic locking
- Contacts: key NC+NO or 2 NC / locking NC+NO or 2 NC
- Two independent safety circuits
- $\leq 1500$  N latching force

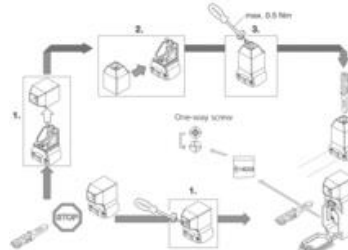
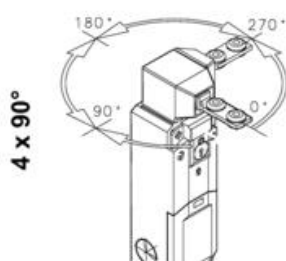


### PRODUCT DESCRIPTION

SLK safety position switches with interlock function are available in versions with spring force locking action and magnetic force locking action. The separate actuator is connected formfit with the safety guard. It transfers the locking force to the safety guard and monitors its position. Thanks to its triple coding, the separate actuator ensures a high degree of antitamper security.

The interlock facility in association with the SLK safety position switches is integrated in the switch enclosure. To lock the actuator in connection with a switching mechanism, the required interlock is achieved by means of a spring mechanism in the spring force locked version and by an electromagnet in the magnetic force locked version.

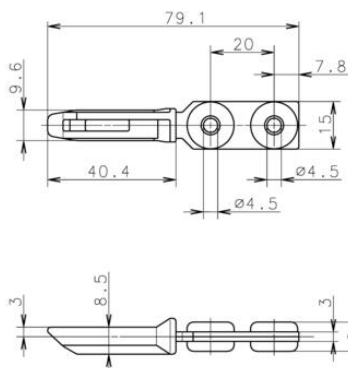
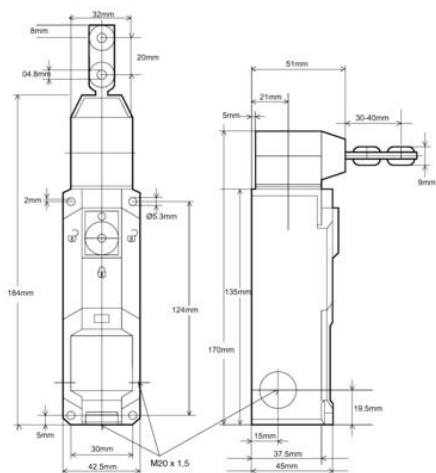
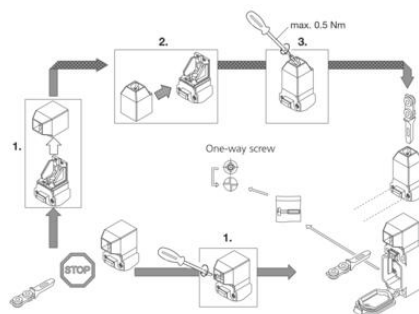
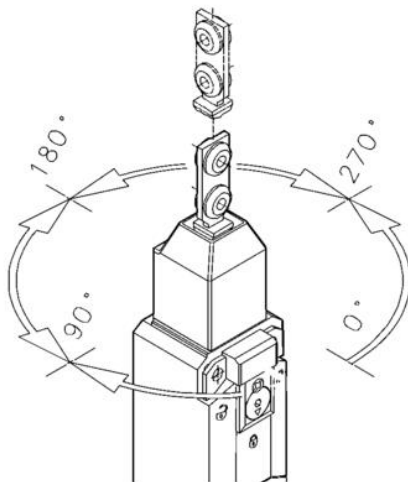
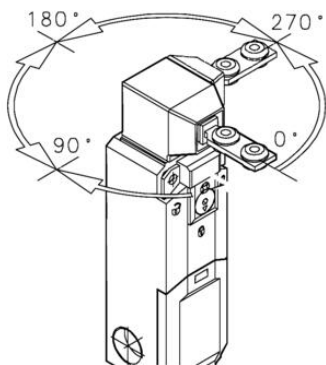
#### Actuator head positions



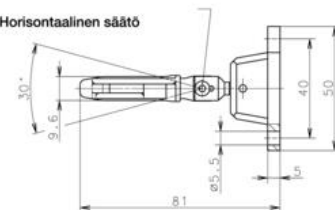
**Note!** Actuator sold separately.

**Important!** SLK safety switch with ERX emergency handle must be mounted outside of the danger zone. Only to be used in the case of emergency.

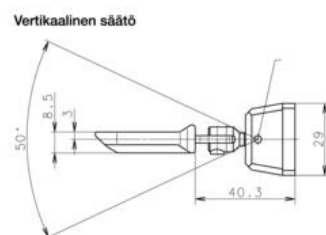
4 x 90°



Horisontaalinen säätö



Vertikaalinen säätö



4 x 90°

