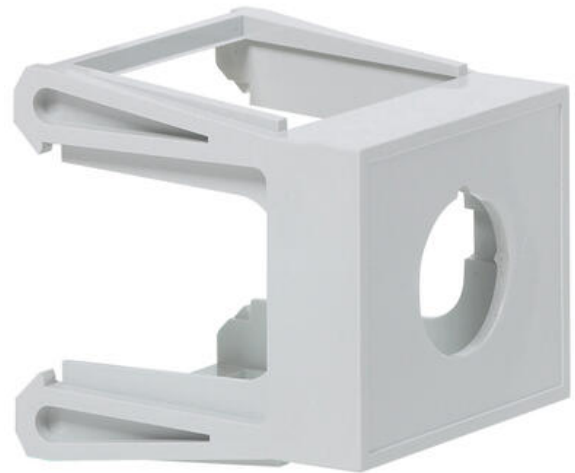


PUSHBUTTON SUPPORT CLIP-ON TO DIN RAIL

LWA0238
PUSHBUTTON DIN RAIL ADAPTOR



PRODUCT DESCRIPTION

SPECIFICATIONS

Approvals	UL 508, CSA 22.2, BV, CB, CE
Climate resistance cyclic damp heat	IEC 60068-2-3
Climate resistance to sea air	IEC 60068-2-52
Climate-resistant heat	IEC 60068-2-30
Temperature range bearing, from	-40 °C
Temperature range bearing, to	70 °C
Temperature range from	-25 °C
Temperature range to	70 °C

