

JOYSTICKS

Joystick heads & contacts

LM11

JOYSTICK CONTACT BLOCK

- Mounts in Ø22.5 mm hole
- 2 or 4 way plus centre off
- Stable or spring return
- Centre position latched or unlatched



PRODUCT DESCRIPTION

Joystick heads are available in 2 or 4 way, stable or spring return and with latched (button to release) or non latched centre off. All heads come with a 3 position contact holder clip but the M11 contact blocks must be ordered separately.

The joystick heads require a special contact block (M11) that has 2 x N/O electrical contacts. The contacts will always be open when the head is in the centre off position and will close respectively in each of 2 positions.

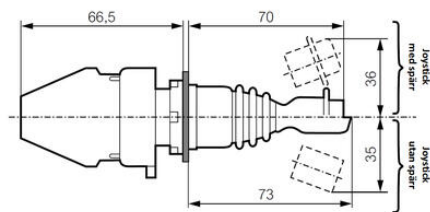
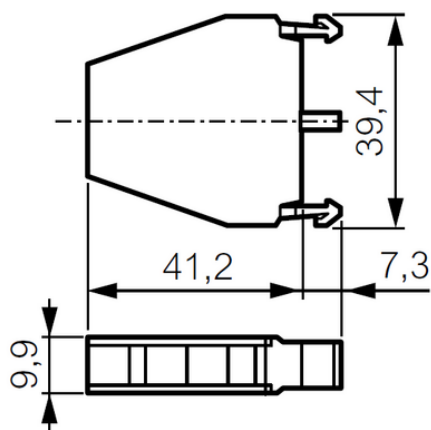
A 2 way joystick can have 1 or 2 x M11 contact blocks to achieve 1 or 2 separate closed contacts in each of the 2 positions respectively excluding the centre off position.

A 4 way joystick requires 2 x M11 contact blocks to achieve a separate closed contact in each of the 4 positions excluding the centre off position.

SPECIFICATIONS

Approvals	BV, CB, CCC, CE, UL
Climate resistance cyclic damp heat	IEC 60068-2-3
Climate resistance to sea air	IEC 60068-2-52
Climate-resistant heat	IEC 60068-2-30
Contact type	2 NO
Conventional free air thermal current Ith	10 A
IP Class	IP20
Rated impulse withstand voltage Uimp (Overvoltage cat III - Pollution 3)	4 kV
Rated insulation voltage Ui	690 V

Rated operating current I _e (AC15/380V)	2 A
Rated operating current I _e (AC15/600V)	1.2 A
Recommended Torque	0.9
Temperature range bearing, from	-40 °C
Temperature range bearing, to	70 °C
Temperature range from	-30 °C
Temperature range to	70 °C



Kontaktfunktion 3-läges joystick

			A	O	B
LM11	13	14	X		
	11	12			X
LM11	23	24			X
	21	22	X		

Kontaktfunktion 5-läges joystick

			A	C	O	B	D
LM11	13	14	X				
	11	12					X
LM11	23	24					X
	21	22	X				

MECHANICAL OPERATION - JOYSTICKS

For joysticks

2 position

Up/In Clip location	Terminal Numbers	Position
1	24 11	X O O X
2	24 12	O X O O

4 position

Up/In Clip location	Terminal Numbers	Position
1	24 11	X O O X
2	24 12	O X O O
3	24 11	X O O X
4	24 12	O X O O

4 position

Up/In Clip location	Terminal Numbers	Position
1	24 11	O O O X
2	24 12	O X O O
3	24 11	O O O X
4	24 12	O X O O

8 position

Up/In Clip location	Terminal Numbers	Position
1	24 11	O O O X
2	24 12	O X O O
3	24 11	O O O X
4	24 12	O X O O
5	24 11	O O O X
6	24 12	O X O O
7	24 11	O O O X
8	24 12	O X O O

MECHANICAL OPERATION - JOYSTICKS

For joysticks

2 position

Up/In Clip location	Terminal Numbers	Position
1	24 11	X O O X
2	24 12	O X O O

4 position

Up/In Clip location	Terminal Numbers	Position
1	24 11	X O O X
2	24 12	O X O O
3	24 11	X O O X
4	24 12	O X O O

4 position

Up/In Clip location	Terminal Numbers	Position
1	24 11	O O O X
2	24 12	O X O O
3	24 11	O O O X
4	24 12	O X O O

8 position

Up/In Clip location	Terminal Numbers	Position
1	24 11	O O O X
2	24 12	O X O O
3	24 11	O O O X
4	24 12	O X O O
5	24 11	O O O X
6	24 12	O X O O
7	24 11	O O O X
8	24 12	O X O O