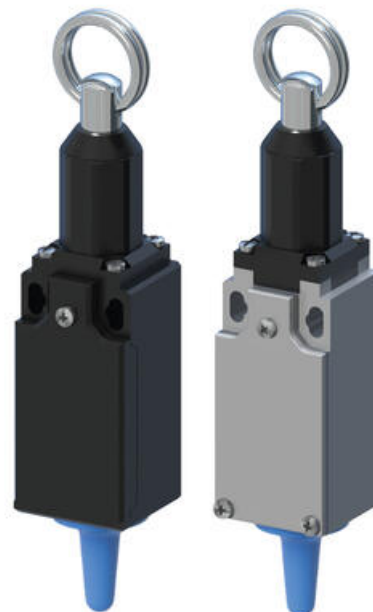


WIRELESS DRAWWIRE SWITCH

APWT98RFH8

Pull action APW 868 MHz

- Wirelessly connected to a relay unit, range up to 80m
- No batteries
- IP66



PRODUCT DESCRIPTION

SPECIFICATIONS

IP Class	IP66
Temperature range from	-25 °C
Temperature range to	70 °C
Material of body	Plastic

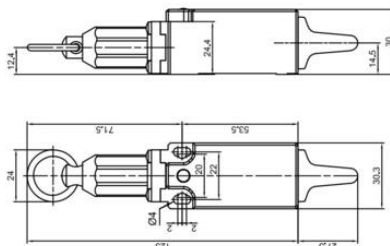
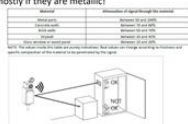
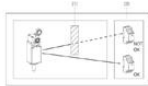


Installation tips

The wireless signal works at its best when the space is free between the receiver and the transmitter. Eliminate as far as possible obstacles, mostly if they are metallic!



• CONFIG



Installation tips

The wireless signal works at its best when the space is free between the receiver and the transmitter. Eliminate as far as possible obstacles, mostly if they are metallic!



• CONFIG

