

WIRELESS LIMITSWITCH

APWT41RFH8

- Wirelessly connected to a relay unit, range up to 80m
- No batteries
- IP66



PRODUCT DESCRIPTION

SPECIFICATIONS

IP Class	IP66
Temperature range from	-25 °C
Temperature range to	70 °C
Material of body	Plastic

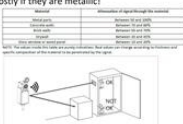
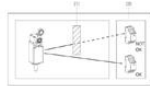


Installation tips

The wireless signal works at its best when the space is free between the receiver and the transmitter. Eliminate as far as possible obstacles, mostly if they are metallic!

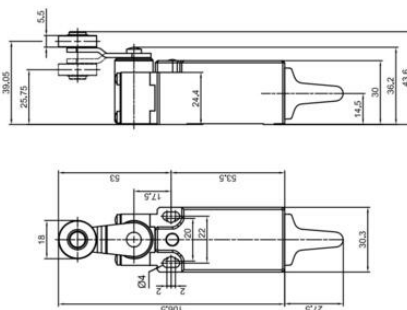


CONFIG



RRH8 (868MHz) and RRH9 (902MHz) receivers
Main features

Feature	RRH8 (868MHz)	RRH9 (902MHz)
Frequency	868 MHz	902 MHz
Power	100 mW	100 mW
Range	80 m	80 m
IP Class	IP66	IP66
Material	Plastic	Plastic
Weight	100 g	100 g
Dimensions	30 x 30 x 30 mm	30 x 30 x 30 mm

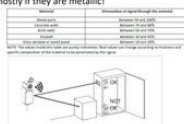
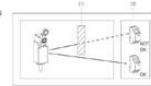


Installation tips

The wireless signal works at its best when the space is free between the receiver and the transmitter. Eliminate as far as possible obstacles, mostly if they are metallic!



CONFIG



RRH8 (868MHz) and RRH9 (902MHz) receivers
Main features

Feature	RRH8 (868MHz)	RRH9 (902MHz)
Frequency	868 MHz	902 MHz
Power	100 mW	100 mW
Range	80 m	80 m
IP Class	IP66	IP66
Material	Plastic	Plastic
Weight	100 g	100 g
Dimensions	30 x 30 x 30 mm	30 x 30 x 30 mm