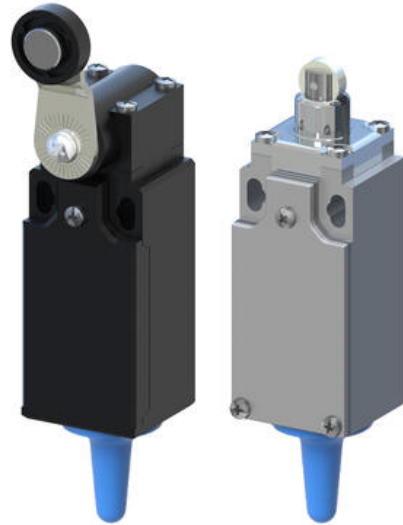


## WIRELESS LIMITSWITCH

### APWT11RFH8

- Wirelessly connected to a relay unit, range up to 80m
- No batteries
- IP66



### PRODUCT DESCRIPTION

## SPECIFICATIONS

<b>IP Class</b>	IP66
<b>Temperature range from</b>	-25 °C
<b>Temperature range to</b>	70 °C
<b>Material of body</b>	Plastic

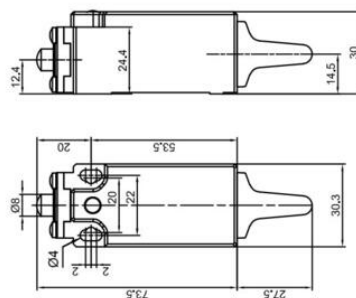
**RRH8 (868MHz) and RRH9 (902MHz) receivers**  
Main features

**Installation tips**

The wireless signal works at its best when the space is free between the receiver and the transmitter.  
Eliminate as far as possible obstacles, mostly if they are metallic!

Material: Material of upper housing (not included)

Color	Black
Material	ABS
Weight	0.015 kg
Dimensions (L x W x H)	24.4 x 14.5 x 30 mm



**RRH8 (868MHz) and RRH9 (902MHz) receivers**  
Main features

**Installation tips**

The wireless signal works at its best when the space is free between the receiver and the transmitter.  
Eliminate as far as possible obstacles, mostly if they are metallic!

Material: Material of upper housing (not included)

Color	Black
Material	ABS
Weight	0.015 kg
Dimensions (L x W x H)	24.4 x 14.5 x 30 mm