



AUER - BUZZER, SIREN AND COMBI-SIGNAL KLH (KDH)

710100004

Mini horn, 12 V dc, KLH

- Membrane buzzer
- 92 dB



PRODUCT DESCRIPTION

Small, low cost membrane buzzer for indoor use.

SPECIFICATIONS

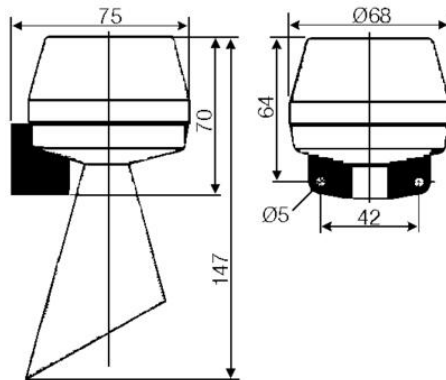
Color House	Grey RAL 7035
IP Class	IP43, NEMA Type 2
Mounting	Vertically
Nominal current max	0.055 A
Nominal current min	0.055 A
Number of tones	1
Sound level max	92 dB
Sound level min	92 dB
Supply Voltage	12 V
Supply Voltage DC Max	13.2 V DC
Supply Voltage DC Min	10.8 V DC
Temperature range from	-25 °C
Temperature range to	50 °C
Terminal connection	2.5 mm ²

Tone frequency max	50 Hz
Tone frequency min	50 Hz
Weight	180 g

The sound pressure decreases by 6 dB when doubling the distance; the following distance table is to be seen as indication, as also factors like tone type, wind speed, wind direction, humidity, weather conditions etc. do influence the sound pressure level.

Distance (m)	Sound pressure dB (A)																				
1	65	70	75	80	85	90	92	94	95	99	100	102	104	106	108	110	112	114	116	118	120
2	59	64	69	74	79	84	86	88	90	92	94	96	98	100	102	104	106	108	110	112	114
3	55	60	65	70	75	80	82	84	86	88	90	92	94	96	98	100	102	104	106	108	110
5	51	56	61	66	71	76	78	80	82	84	86	88	90	92	94	96	98	100	102	104	106
10	45	50	55	60	65	70	72	74	76	78	80	82	84	86	88	90	92	94	96	98	100
20	39	44	49	54	59	64	66	68	70	72	74	76	78	80	82	84	86	88	90	92	94
30	35	40	45	50	55	60	62	64	66	68	70	72	74	76	78	80	82	84	86	88	90
50	36	41	46	51	56	60	62	64	66	68	70	72	74	76	78	80	82	84	86	88	90
100				40	45	50	52	54	56	58	60	62	64	66	68	70	72	74	76	78	80
200				39	44	48	50	52	54	56	58	60	62	64	66	68	70	72	74	76	78
500				35	40	42	44	46	48	50	52	54	56	58	60	62	64	66	68	70	74

The sound pressure decreases by 6 dB when doubling the distance.



The sound pressure decreases by 6 dB when doubling the distance; the following distance table is to be seen as indication, as also factors like tone type, wind speed, wind direction, humidity, weather conditions etc. do influence the sound pressure level.

Distance (m)	Sound pressure dB (A)																				
1	65	70	75	80	85	90	92	94	95	99	100	102	104	106	108	110	112	114	116	118	120
2	59	64	69	74	79	84	86	88	90	92	94	96	98	100	102	104	106	108	110	112	114
3	55	60	65	70	75	80	82	84	86	88	90	92	94	96	98	100	102	104	106	108	110
5	51	56	61	66	71	76	78	80	82	84	86	88	90	92	94	96	98	100	102	104	106
10	45	50	55	60	65	70	72	74	76	78	80	82	84	86	88	90	92	94	96	98	100
20	39	44	49	54	59	64	66	68	70	72	74	76	78	80	82	84	86	88	90	92	94
30	35	40	45	50	55	60	62	64	66	68	70	72	74	76	78	80	82	84	86	88	90
50	36	41	46	51	56	60	62	64	66	68	70	72	74	76	78	80	82	84	86	88	90
100				40	45	50	52	54	56	58	60	62	64	66	68	70	72	74	76	78	80
200				39	44	48	50	52	54	56	58	60	62	64	66	68	70	72	74	76	78
500				35	40	42	44	46	48	50	52	54	56	58	60	62	64	66	68	70	74

The sound pressure decreases by 6 dB when doubling the distance.

