



R SERIES, MODULAR BEACON Ø95MM

850507408

RDC LED Steady beacon, ø95mm, Yellow, 48 V ac/dc

- 2 lense heights
- Modular design – easy to mount/service
- Steady, Flashing, Strobe, Rotating and Pulsing light options
- High Performance option
- IP66



PRODUCT DESCRIPTION

The new R Series is the brightest modular LED beacon in its category and is especially designed for maximum signalling effect. Simply pick the required [base](#) and choose from a wide range of light modules.

It is available in two lens designs (high/compact). The compact lens is milky-white in colour and its attractive design makes it particularly suitable for indoor use. The high lens is available as a high performance version in addition to the standard performance version.

The R series light modules are available in steady, multicolour and multifunction ranges.

With a Ø95mm Modular beacon and a Ø110mm [base](#), the R Series is a powerful, flexible and robust system. Each light module can be combined with audible base easy. It also offers a simple and safe installation: Pluggable terminal for convenient electrical wiring with plug-in terminal.

The standard base comes with cable entry from below through a grommet as well as different hole patterns as knockouts allow easy installation.

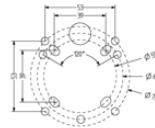
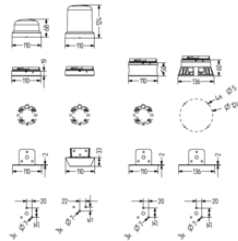
The universal base offers an additional opening for lateral cable entry/exit and the option for pole mounting (on 25 mm poles) are given. For further mounting types; metal brackets for standard and universal base, metal bracket for acoustic base, design bracket. Combined with its maintenance friendly design it is easy to mount and service.

SPECIFICATIONS

Color House	Black
Color Lens	Yellow
Diameter	95 mm
Height	124 mm
IK Class	8
IP Class	IP66
Light source	LED
Light type	Steady

Nominal current	340 mA
Nominal Supply Voltage	48 V AC/DC
Operational Temperature	-30°C ... 60°C
Weight	225 g
Width	110 mm
Voltage Range	+/-10%

	Red [cd]	Amber [cd]	Yellow [cd]	Green [cd]	Blue [cd]	White [cd]
RDMUP	118	226	400	127	43	450
RDMHP	37	116	179	68	14	190
RDM	25	81	117	40	8	121

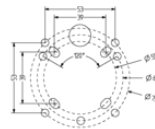
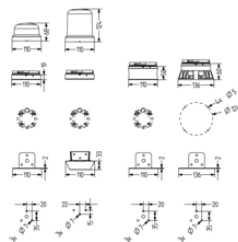


Single Colors

red
amber/orange
yellow
green
blue
white

RDC/RDM	RDM-HP
24,0 Cd	36,0 Cd
61,3 Cd	101,7 Cd
101,8 Cd	168,8 Cd
46,4 Cd	76,9 Cd
8,4 Cd	13,9 Cd
111,0 Cd	184,0 Cd

	Red [cd]	Amber [cd]	Yellow [cd]	Green [cd]	Blue [cd]	White [cd]
RDMUP	118	226	400	127	43	450
RDMHP	37	116	179	68	14	190
RDM	25	81	117	40	8	121



Single Colors

red
amber/orange
yellow
green
blue
white

RDC/RDM	RDM-HP
24,0 Cd	36,0 Cd
61,3 Cd	101,7 Cd
101,8 Cd	168,8 Cd
46,4 Cd	76,9 Cd
8,4 Cd	13,9 Cd
111,0 Cd	184,0 Cd