



## R SERIES, MODULAR BEACON Ø95MM

850504408

RDC LED Steady beacon, ø95mm, Clear, 48 V ac/dc

- 2 lense heights
- Modular design – easy to mount/service
- Steady, Flashing, Strobe, Rotating and Pulsing light options
- High Performance option
- IP66



### PRODUCT DESCRIPTION

The new R Series is the brightest modular LED beacon in its category and is especially designed for maximum signalling effect. Simply pick the required [base](#) and choose from a wide range of light modules.

It is available in two lens designs (high/compact). The compact lens is milky-white in colour and its attractive design makes it particularly suitable for indoor use. The high lens is available as a high performance version in addition to the standard performance version.

The R series light modules are available in steady, multicolour and multifunction ranges.

With a Ø95mm Modular beacon and a Ø110mm [base](#), the R Series is a powerful, flexible and robust system. Each light module can be combined with audible base easy. It also offers a simple and safe installation: Pluggable terminal for convenient electrical wiring with plug-in terminal.

The standard base comes with cable entry from below through a grommet as well as different hole patterns as knockouts allow easy installation.

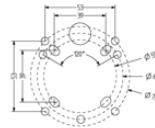
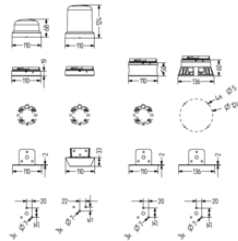
The universal base offers an additional opening for lateral cable entry/exit and the option for pole mounting (on 25 mm poles) are given. For further mounting types; metal brackets for standard and universal base, metal bracket for acoustic base, design bracket. Combined with its maintenance friendly design it is easy to mount and service.

### SPECIFICATIONS

Color House	Black
Color Lens	Clear
Diameter	95 mm
Height	124 mm
IK Class	8
IP Class	IP66
Light source	LED
Light type	Steady

<b>Nominal current</b>	340 mA
<b>Nominal Supply Voltage</b>	48 V AC/DC
<b>Operational Temperature</b>	-30°C ... 60°C
<b>Weight</b>	225 g
<b>Width</b>	110 mm
<b>Voltage Range</b>	+/-10%

	Red [cd]	Amber [cd]	Yellow [cd]	Green [cd]	Blue [cd]	White [cd]
RDMUP	118	226	400	127	43	450
RDMHP	37	116	179	68	14	190
RDM	25	81	117	40	8	121

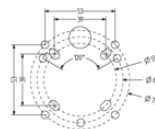
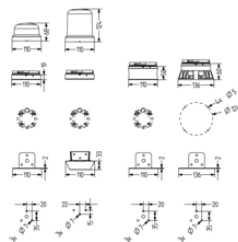


#### Single Colors

red  
amber/orange  
yellow  
green  
blue  
white

RDC/RDM	RDM-HP
24,0 Cd	36,0 Cd
61,3 Cd	101,7 Cd
101,8 Cd	168,8 Cd
46,4 Cd	76,9 Cd
8,4 Cd	13,9 Cd
111,0 Cd	184,0 Cd

	Red [cd]	Amber [cd]	Yellow [cd]	Green [cd]	Blue [cd]	White [cd]
RDMUP	118	226	400	127	43	450
RDMHP	37	116	179	68	14	190
RDM	25	81	117	40	8	121



#### Single Colors

red  
amber/orange  
yellow  
green  
blue  
white

RDC/RDM	RDM-HP
24,0 Cd	36,0 Cd
61,3 Cd	101,7 Cd
101,8 Cd	168,8 Cd
46,4 Cd	76,9 Cd
8,4 Cd	13,9 Cd
111,0 Cd	184,0 Cd