



## R SERIES, MODULAR BEACON Ø95MM

850506408

RDC LED Steady beacon, ø95mm, Green, 48 V ac/dc

- 2 lense heights
- Modular design – easy to mount/service
- Steady, Flashing, Strobe, Rotating and Pulsing light options
- High Performance option
- IP66



### PRODUCT DESCRIPTION

The new R Series is the brightest modular LED beacon in its category and is especially designed for maximum signalling effect. Simply pick the required [base](#) and choose from a wide range of light modules.

It is available in two lens designs (high/compact). The compact lens is milky-white in colour and its attractive design makes it particularly suitable for indoor use. The high lens is available as a high performance version in addition to the standard performance version.

The R series light modules are available in steady, multicolour and multifunction ranges.

With a Ø95mm Modular beacon and a Ø110mm [base](#), the R Series is a powerful, flexible and robust system. Each light module can be combined with audible base easy. It also offers a simple and safe installation: Pluggable terminal for convenient electrical wiring with plug-in terminal.

The standard base comes with cable entry from below through a grommet as well as different hole patterns as knockouts allow easy installation.

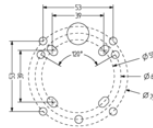
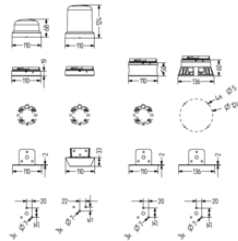
The universal base offers an additional opening for lateral cable entry/exit and the option for pole mounting (on 25 mm poles) are given. For further mounting types; metal brackets for standard and universal base, metal bracket for acoustic base, design bracket. Combined with its maintenance friendly design it is easy to mount and service.

### SPECIFICATIONS

|              |        |
|--------------|--------|
| Color House  | Black  |
| Color Lens   | Green  |
| Diameter     | 95 mm  |
| Height       | 124 mm |
| IK Class     | 8      |
| IP Class     | IP66   |
| Light source | LED    |
| Light type   | Steady |

|                                |                |
|--------------------------------|----------------|
| <b>Nominal current</b>         | 340 mA         |
| <b>Nominal Supply Voltage</b>  | 48 V AC/DC     |
| <b>Operational Temperature</b> | -30°C ... 60°C |
| <b>Weight</b>                  | 225 g          |
| <b>Width</b>                   | 110 mm         |
| <b>Voltage Range</b>           | +/-10%         |

|       | Red<br>[cd] | Amber<br>[cd] | Yellow<br>[cd] | Green<br>[cd] | Blue<br>[cd] | White<br>[cd] |
|-------|-------------|---------------|----------------|---------------|--------------|---------------|
| RDMUP | 118         | 226           | 400            | 127           | 43           | 450           |
| RDMHP | 37          | 116           | 179            | 68            | 14           | 190           |
| RDM   | 25          | 81            | 117            | 40            | 8            | 121           |

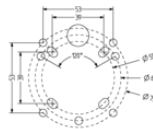
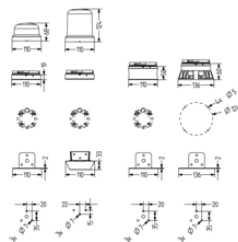


#### Single Colors

red  
amber/orange  
yellow  
green  
blue  
white

| RDC/RDM  | RDM-HP   |
|----------|----------|
| 24,0 Cd  | 36,0 Cd  |
| 61,3 Cd  | 101,7 Cd |
| 101,8 Cd | 168,8 Cd |
| 46,4 Cd  | 76,9 Cd  |
| 8,4 Cd   | 13,9 Cd  |
| 111,0 Cd | 184,0 Cd |

|       | Red<br>[cd] | Amber<br>[cd] | Yellow<br>[cd] | Green<br>[cd] | Blue<br>[cd] | White<br>[cd] |
|-------|-------------|---------------|----------------|---------------|--------------|---------------|
| RDMUP | 118         | 226           | 400            | 127           | 43           | 450           |
| RDMHP | 37          | 116           | 179            | 68            | 14           | 190           |
| RDM   | 25          | 81            | 117            | 40            | 8            | 121           |



#### Single Colors

red  
amber/orange  
yellow  
green  
blue  
white

| RDC/RDM  | RDM-HP   |
|----------|----------|
| 24,0 Cd  | 36,0 Cd  |
| 61,3 Cd  | 101,7 Cd |
| 101,8 Cd | 168,8 Cd |
| 46,4 Cd  | 76,9 Cd  |
| 8,4 Cd   | 13,9 Cd  |
| 111,0 Cd | 184,0 Cd |