



AUER - PANEL MOUNTED BUZZER

812500405

ESK BUZZER 30mm 12-24VAC/DC

- Panel mounted buzzer with loud sound level
- Adjustable volume
- 3 selectable sound signals
- For mounting in drilled holes 22.5 mm or 30.5 mm



PRODUCT DESCRIPTION

Panel mounted buzzer with wide voltage range and high enclosure class, IP65. Excellent when you want to call for extra attention in a panel.

SPECIFICATIONS

Color House	Black
Diameter	30 mm
IP Class	IP65
Nominal current max	0.04 A
Nominal current min	0.04 A
Number Of Optional Modules	0
Number of tones	2
Operating Voltage AC / DC Max	24 V
Sound level max	65 dB
Sound level min	65 dB
Supply Voltage AC / DC Min	10 V
Temperature range from	-25 °C
Temperature range to	60 °C
Terminal connection	2.5 mm ²

Tone frequency max

3500 Hz

Weight

30 g

The sound pressure decreases by 6 dB when doubling the distance; the following distance table is to be seen as indication, as also factors like tone type, wind speed, wind direction, humidity, weather conditions etc. do influence the sound pressure level.

Distance (m)	Sound pressure dB (A)																					
1	65	70	75	80	85	90	92	94	96	98	100	102	104	106	108	110	112	114	116	118	120	
2	59	64	69	74	79	84	86	88	90	92	94	96	98	100	102	104	106	108	110	112	114	
3	55	60	65	70	75	80	82	84	86	88	90	92	94	96	98	100	102	104	106	108	110	
5	51	56	61	66	71	76	78	80	82	84	86	88	90	92	94	96	98	100	102	104	106	
10	45	50	55	60	65	70	72	74	76	78	80	82	84	86	88	90	92	94	96	98	100	
20	39	44	49	54	59	64	66	68	70	72	74	76	78	80	82	84	86	88	90	92	94	
30	35	40	45	50	55	60	62	64	66	68	70	72	74	76	78	80	82	84	86	88	90	
50	36	41	46	51	56	58	60	62	64	66	68	70	72	74	76	78	80	82	84	86	88	
100																						
200																						
500																						

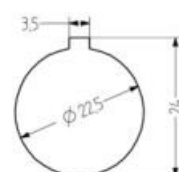
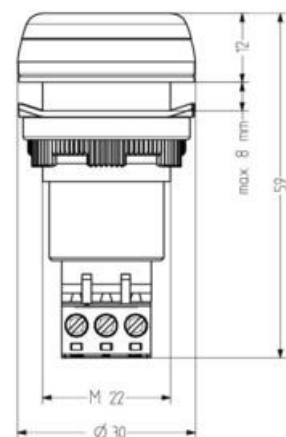
The sound pressure decreases by 6 dB when the distance doubles.

The sound pressure decreases by 6 dB when doubling the distance

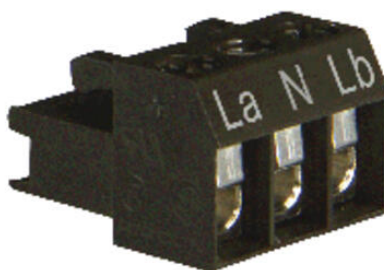
Tone table

Tone on terminal		
La	N	Lb
X	X	pushing tone
X	X	continuous tone

ESK



Justerbar volym
med hjälp av
potentiometer,
(ej ESK.)



The sound pressure decreases by 6 dB when doubling the distance; the following distance table is to be seen as indication, as also factors like tone type, wind speed, wind direction, humidity, weather conditions etc. do influence the sound pressure level.

Distance (m)	Sound pressure dB (A)																					
1	65	70	75	80	85	90	92	94	96	98	100	102	104	106	108	110	112	114	116	118	120	
2	59	64	69	74	79	84	86	88	90	92	94	96	98	100	102	104	106	108	110	112	114	
3	55	60	65	70	75	80	82	84	86	88	90	92	94	96	98	100	102	104	106	108	110	
5	51	56	61	66	71	76	78	80	82	84	86	88	90	92	94	96	98	100	102	104	106	
10	45	50	55	60	65	70	72	74	76	78	80	82	84	86	88	90	92	94	96	98	100	
20	39	44	49	54	59	64	66	68	70	72	74	76	78	80	82	84	86	88	90	92	94	
30	35	40	45	50	55	60	62	64	66	68	70	72	74	76	78	80	82	84	86	88	90	
50	36	41	46	51	56	58	60	62	64	66	68	70	72	74	76	78	80	82	84	86	88	
100																						
200																						
500																						

The sound pressure decreases by 6 dB when doubling the distance



Justerbar volym
med hjälp av
potentiometer,
(ej ESK.)

