



Q SERIES, CUBIC BEACON, 94MM, 132MM, 184MM OR 228MM

874661408

QFM STROBE BEACON 24-48VAD AMB

- 94mm, 132mm, 184mm or 228mm Cubic beacon
- Steady, Flashing, Strobe and Multi-strobe light options
- Wide control voltage range



PRODUCT DESCRIPTION

The Q series is the largest and most comprehensive beacon series in four sizes with a square design. The extensive product range is available in 94 mm, 132 mm, 184 mm and 228 mm sizes and is available with state-of-the-art LED or xenon technology.

The Q series offers a long lifetime, low current consumption and is vibration proof. The LED steady/flashing beacons are available in all sizes and the LED multi strobe beacons in 184mm and 228mm. It is also available in conventional xenon strobe technique

This unique range includes LED technique with high signalling effect 3 strobe patterns (double/6 times/multi strobe) and externally switchable.

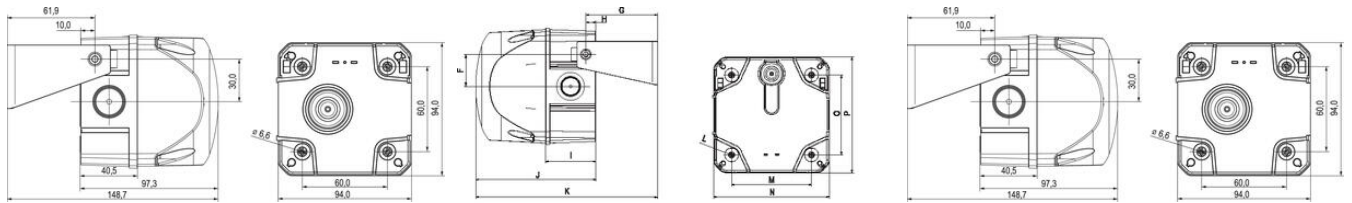
For applications in the industry, process control, fire/gas alarm, marine, and is also fit for plc applications (leakage, inrush current)

Luminaires of the LED series boast a particularly high luminous intensity of up to 400 candela thanks to special high-power LEDs. The unique calotte design gives the signal effect both frontally and laterally. The calottes of the Q series are available in six different colours and are made of highly impact-resistant polycarbonate, which is UV-stabilised and guarantees colour fastness even under extreme conditions. With a protection class of IP66 and an impact resistance of IK09, the Q series is suitable for industrial, processing and marine applications.

SPECIFICATIONS

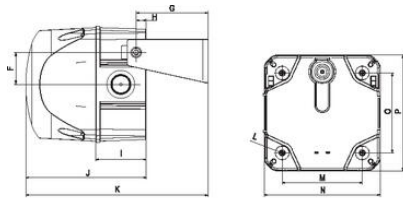
Color House	Red
Color Lens	Orange
Diameter	132 mm
Flash Energy	10 J
Flash Frequency	1 Hz
Height	138 mm
IK Class	9
IP Class	IP66
Light source	Xenon

Light type	Strobe
Nominal current	900 mA
Nominal Supply Voltage	24-48 V AC/DC
Operational Temperature	-30°C ... 60°C
Terminal connection	2.5 mm ²



	A	B	C	D	E	F	G	H	I	J	K	L	M	N	O	P
Size 2	143	95	10	32	50	36,6	81,5	11,5	57,4	136,8	206,8	6,5	91	131,8	91	131,8
Size 3	199	112	16	48	70	55	105,5	18,5	72,5	175,8	262,8	6,5	124	183,5	124	183,5
Size 4	243,3	140	10	70	100	68	133,3	16,8	80,8	223,4	340	167	228,4	167	228,4	6,5

Measuring unit mm



	A	B	C	D	E	F	G	H	I	J	K	L	M	N	O	P
Size 2	143	95	10	32	50	36,6	81,5	11,5	57,4	136,8	206,8	6,5	91	131,8	91	131,8
Size 3	199	112	16	48	70	55	105,5	18,5	72,5	175,8	262,8	6,5	124	183,5	124	183,5
Size 4	243,3	140	10	70	100	68	133,3	16,8	80,8	223,4	340	167	228,4	167	228,4	6,5

Measuring unit mm