

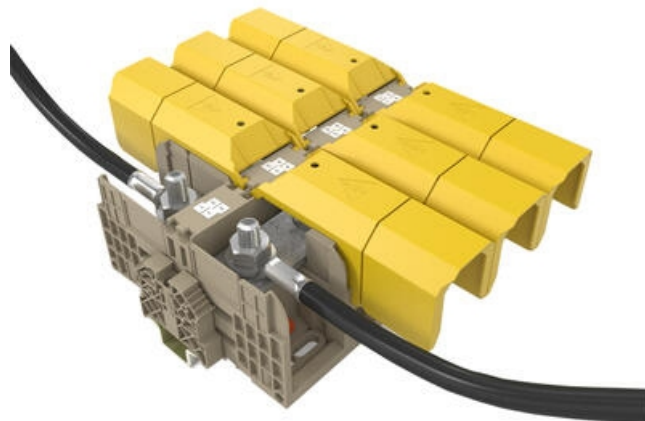
## HIGH-POWER STUD TERMINALS - HSKG 35-300MM<sup>2</sup>

HSKG

17027.2

HSKG 300/M16/B/B, 300mm<sup>2</sup> Dual M16 stud terminal

- Dual stud connection
- Direct & TS35 mount
- IP20 with Gull Wing Covers fitted
- Material polyamide 6.6
- Fire-resistance class V0



### PRODUCT DESCRIPTION

The newest generation of stud terminals from CONTA-CLIP offers secure connections for all high power conductors.

The HSKG stud terminals are available with stud sizes of with M6, M8, M10, M12 and rated current is from 125 A to 520A at a rated voltage of 1000 V.

The wire connection range is from 2.5 mm<sup>2</sup> to 300 mm<sup>2</sup>. and crimped lugs are used to fit the cables to the busbar using the hexagonal nut with built in washer.

When used together with the ADH hinged covers, the HSKG stud terminals provide outstanding finger and touch protection. The ADH cover is easy to mount; it simply snaps into the side walls of the stud terminals as it is closed.

In this quick and reliable way, touch-safe protection of the terminal points is always guaranteed.

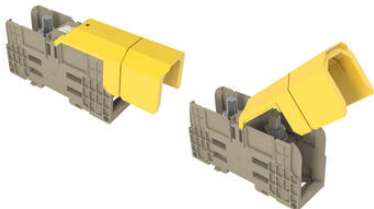
Added features include -

- Measuring Point located on the ADH covers to allow probes to be inserted without exposing the conductor.
- Direct or DIN Rail Mount
- Interlocking housings for improved stability
- Cross connectable

## SPECIFICATIONS

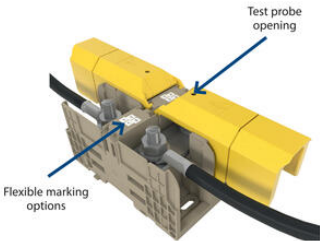
Approvals	UL, GL, cUL, KEMA KUR, EAC
Bureau Veritas test standard	IEC 60947-7-1
Color	Beige
Connections	2
Contact clamping area	≤ 300 mm <sup>2</sup>
Contamination degree	3
Country of origin	DE
Cross-Section	300 mm <sup>2</sup>
cUL test standard	C22.2 No 158
DIN 46234 / 1 cable lug per side, max.	240 mm <sup>2</sup>
DIN 46234 / 1 cable lug per side, min.	25 mm <sup>2</sup>
DIN 46234 / 2 cable lugs per side, max.	240 mm <sup>2</sup>
DIN 46234 / 2 cable lugs per side, min.	50 mm <sup>2</sup>
DIN 46235: 1 cable lug per side, max.	300 mm <sup>2</sup>
DIN 46235: 1 cable lug per side, min.	50 mm <sup>2</sup>
DIN 46235: 2 cable lugs per side, max.	240 mm <sup>2</sup>
DIN 46235: 2 cable lugs per side, min.	50 mm <sup>2</sup>
EAC test standard	TR ZU 004/2011
Flamklass	UL94-V0
GL test standard	IEC 60947-7-1:2009
Height TS 35/7.5	86 mm
Height with TW/ADH	90 mm
Insulation Material	Polyamide 6.6
KEMA KEUR test standard	EN 60947-7-1:2009
Length	164 mm
Length with TW/ADH	288 mm
Mounting	TS 35/7,5
Number of levels	1
Operating temperature from	-40 °C
Operating temperature to	120 °C
Overvoltage category	III

<b>Pack Size</b>	5
<b>Rated current cUL</b>	510 A
<b>Rated Current IEC</b>	520 A
<b>Rated impulse voltage</b>	8 kV
<b>Rated wire cross section from (AWG)</b>	6
<b>Rated wire cross section to (AWG)</b>	600 Kcmil
<b>Rated voltage cUL</b>	1000 V
<b>Rated Voltage IEC</b>	1000 V
<b>Rated Voltage To UL</b>	1000 V
<b>Stud size</b>	M 16
<b>Tariff code</b>	85369010
<b>Torque max</b>	60
<b>Torque Min</b>	25
<b>UL test standard</b>	UL 1059
<b>Weight</b>	529 g
<b>Width</b>	55 mm

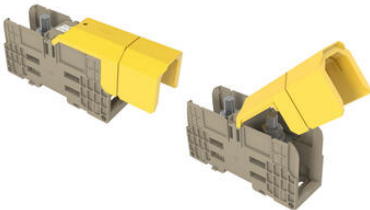
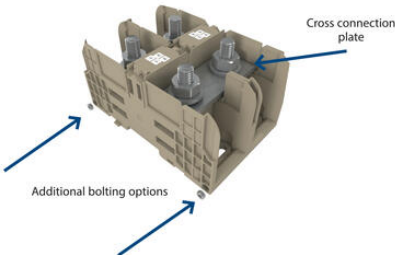


Using the ADH covers

Individual ADH... covers are available for each width of stud terminal. They are designed for the different sizes and the corresponding clearance and creepage distances. It is also possible to shorten the covers along pre-creased breakage points. The ADH cover is attached by pressing the cover down onto the base terminal so that the cover snaps onto the terminal.

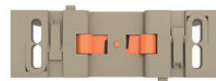
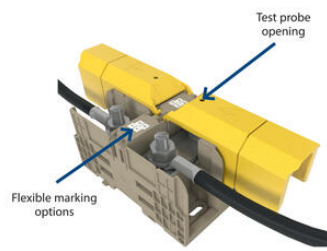


TS mount / direct mount



Using the ADH covers

Individual ADH... covers are available for each width of stud terminal. They are designed for the different sizes and the corresponding clearance and creepage distances. It is also possible to shorten the covers along pre-creased breakage points. The ADH cover is attached by pressing the cover down onto the base terminal so that the cover snaps onto the terminal.



TS mount / direct mount

