

POLYESTER ENCLOSURES

4140000

Polyester EnclosureCP140 (80X75X55)

- Glass fiber reinforced
- Suitable for demanding environments
- Shock resistant
- High protection, IP65 rated



PRODUCT DESCRIPTION

Bernstein CPG and CPS enclosure ranges are manufactured from high-grade glass fibre-reinforced polyester and available in both grey (RAL7000) and black (RAL9005).

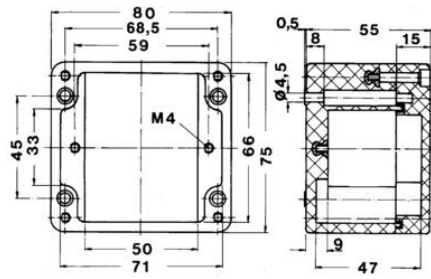
Glass reinforced polyester enclosures of very high corrosion resistance and UL94/V0 flammability rating.

SPECIFICATIONS

Width	80 mm
Height	75 mm
Depth	55 mm
IP Class	IP66
Approvals	GL, UL
Temperature range from	-40 °C
Temperature range to	80 °C
Color	Grey RAL 7000
Material	Polyester

Enclosure incl. seals

	-40°C to +100°C	-40°C to +100°C	Enclosure material -40°C to +100°C
PUR seal (Standard)	-40°C to +100°C	-40°C to +100°C	
CR seal	-30°C to +80°C	-30°C to +80°C	
Silicone foam seal	-40°C to +100°C	-40°C to +100°C	
Silicone full seal	-40°C to +100°C	-40°C to +100°C	
EPDM seal	-35°C to +90°C	-35°C to +90°C	
HF/EMC seal	-40°C to +125°C	-40°C to +125°C	



Enclosure incl. seals

Seal type	Temperature range 1	Temperature range 2	Enclosure material
PUR seal (Standard)	-45°C to +120°C	-45°C to +120°C	-40°C to +185°C
CR seal	-35°C to +80°C	-35°C to +80°C	
Silicone foam seal	-45°C to +120°C	-45°C to +120°C	
Silicone full seal	-45°C to +120°C	-45°C to +120°C	
EPDM seal	-35°C to +100°C	-35°C to +100°C	
HEBAC seal	-40°C to +125°C	-40°C to +125°C	