

POLYESTER ENCLOSURES

4190000

Polyester EnclosureCP190(190X75X55)

- Glass fiber reinforced
- Suitable for demanding environments
- Shock resistant
- High protection, IP65 rated



PRODUCT DESCRIPTION

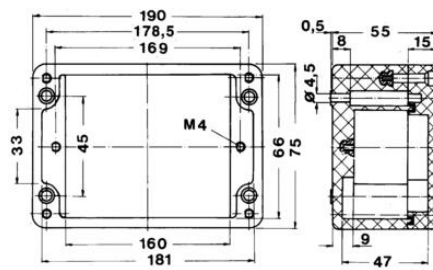
Bernstein CPG and CPS enclosure ranges are manufactured from high-grade glass fibre-reinforced polyester and available in both grey (RAL7000) and black (RAL9005).

Glass reinforced polyester enclosures of very high corrosion resistance and UL94/V0 flammability rating.

SPECIFICATIONS

Width	190 mm
Height	75 mm
Depth	55 mm
IP Class	IP66
Approvals	GL, UL
Temperature range from	-40 °C
Temperature range to	80 °C
Color	Grey RAL 7000
Material	Polyester

Enclosure incl. seals			Enclosure material: -40°C to +105°C	
PUR seal (Standard)	-40°C to +100°C	-40°C to +100°C		
CR seal	-30°C to +80°C	-30°C to +80°C		
Silicone foam seal	-40°C to +130°C	-40°C to +130°C		
Silicone full seal	-40°C to +135°C	-40°C to +135°C		
EPDM seal	-25°C to +100°C	-25°C to +100°C		
HFVAC seal	-40°C to +125°C	-40°C to +125°C		



Enclosure incl. seals

PUH-seal (Standard)	-40°C to +100°C	-40°C to +100°C	Enclosure material: -40°C to +100°C
CR-seal	-30°C to +80°C	-30°C to +80°C	
Silicone fluoro seal	-30°C to +180°C	-30°C to +180°C	
Silicone fluoro seal	-40°C to +180°C	-40°C to +180°C	
Silicone fluoro seal	-40°C to +180°C	-40°C to +180°C	
EPDM seal	-25°C to +100°C	-25°C to +100°C	
NBR/DMC seal	-40°C to +120°C	-40°C to +120°C	