

## POLYESTER ENCLOSURES

4220000

Polyester EnclosureCP220(122X120X90)

- Glass fiber reinforced
- Suitable for demanding environments
- Shock resistant
- High protection, IP65 rated



### PRODUCT DESCRIPTION

Bernstein CPG and CPS enclosure ranges are manufactured from high-grade glass fibre-reinforced polyester and available in both grey (RAL7000) and black (RAL9005).

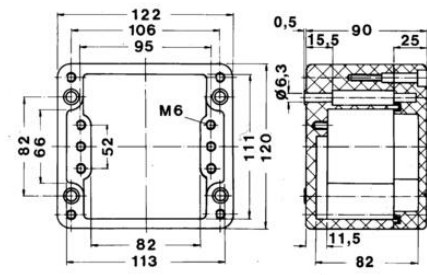
Glass reinforced polyester enclosures of very high corrosion resistance and UL94/V0 flammability rating.

### SPECIFICATIONS

<b>Width</b>	122 mm
<b>Height</b>	120 mm
<b>Depth</b>	90 mm
<b>IP Class</b>	IP66
<b>Approvals</b>	GL, UL
<b>Temperature range from</b>	-40 °C
<b>Temperature range to</b>	80 °C
<b>Color</b>	Grey RAL 7000
<b>Material</b>	Polyester

**Enclosure incl. seals**

	-40°C to +200°C	-40°C to +150°C	Enclosure material: -40°C to +150°C
PUH seal (Standard)	-30°C to +80°C	30°C to +80°C	
Cl seal	-30°C to +80°C	30°C to +80°C	
Silicone foam seal	-40°C to +150°C	-40°C to +150°C	
Silicone full seal	-40°C to +150°C	-40°C to +150°C	
EPDM seal	-25°C to +150°C	-15°C to +150°C	
HF/EMC seal	-40°C to +125°C	-40°C to +125°C	



**Enclosure incl. seals**

Material (standard)	-40°C to +100°C	-40°C to +150°C	Enclosure material: 40°C to +100°C
CR-seal	-20°C to +80°C	-30°C to +100°C	
Silicone fluoro seal	-20°C to +100°C	-40°C to +100°C	
Silicone gel seal	-20°C to +100°C	-40°C to +100°C	
EPDM seal	-20°C to +100°C	-30°C to +100°C	
NBR/DMC seal	-40°C to +120°C	-40°C to +120°C	