

## VARIOLINE LAMP - LED 021/022

### Varioline

02100.0-30

LED 021 100-240 V AC, with on/off switch, magnet fixing

- Maintenance free LED lighting
- IR sensor or switched versions
- 360° rotatable, glare free
- Screw or magnet fixing
- Ideal for large enclosures



### PRODUCT DESCRIPTION

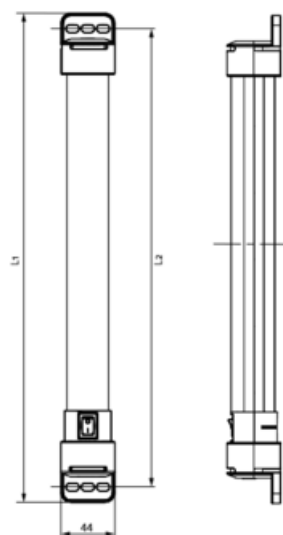
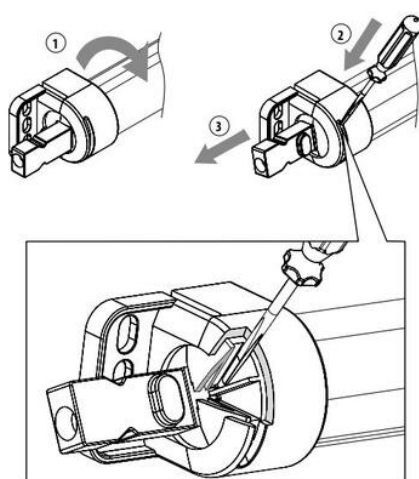
The LED 021/022 Varioline lamp is a compact and powerful LED lamp for enclosures, with a power consumption of only 11 W/16 W. The LED tube emits more than 1,000/1,700 Lm, illuminating even large enclosures to their full depth and height.

The emitted daylight colour of 6,500 K provides natural and non-fading colour reproduction and in-turn safety for the user. The LED 021/022 is glare free, rotatable 360° and uses Mid-power LEDs giving a service life of 60,000 h.

### SPECIFICATIONS

|                   |                   |
|-------------------|-------------------|
| Activation        | Switch            |
| Approvals         | CE, RoHS          |
| Approvals pending | UL, VDE           |
| Color             | Translucent/White |
| Frequenze         | 50/60 Hz          |
| Height            | 44 mm             |
| Humidity Storage  | <90% RH           |
| IP Class          | IP20              |
| Length            | 400 mm            |
| Light source      | LED               |
| Material of body  | Plastic           |
| Mounting          | Magnetic mount    |

|                                |                       |
|--------------------------------|-----------------------|
| <b>Nominal voltage</b>         | 100-240 V AC          |
| <b>Operating Humidity</b>      | < 90% RH              |
| <b>Operational Temperature</b> | -30°C ... +40°C       |
| <b>Power Consumption</b>       | 11 W                  |
| <b>Protection Class</b>        | II (double insulated) |
| <b>Storage temperature</b>     | -40°C ... +85°C       |
| <b>Weight</b>                  | 0.3 kg                |
| <b>Width</b>                   | 44 mm                 |
| <b>Voltage max</b>             | 265 V ac              |
| <b>Voltage min</b>             | 90 V ac               |



LED 021 (Size 1)  
L1 = 400 mm  
L2 = 375 mm

LED 022 (Size 2)  
L1 = 600 mm  
L2 = 575 mm



View of magnet fixing

