

## VARIOLINE LAMP - LED 021/022

Varioline

02210.0-00

LED 022 100-240 V AC, with PIR sensor, screw fixing



- Maintenance free LED lighting
- IR sensor or switched versions
- 360° rotatable, glare free
- Screw or magnet fixing
- Ideal for large enclosures



### PRODUCT DESCRIPTION

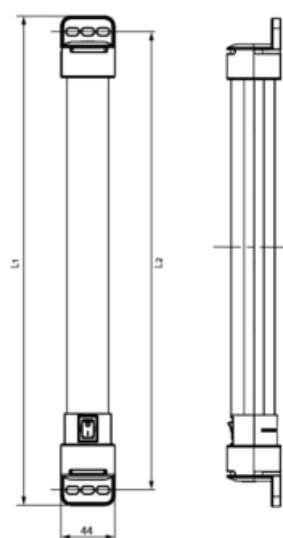
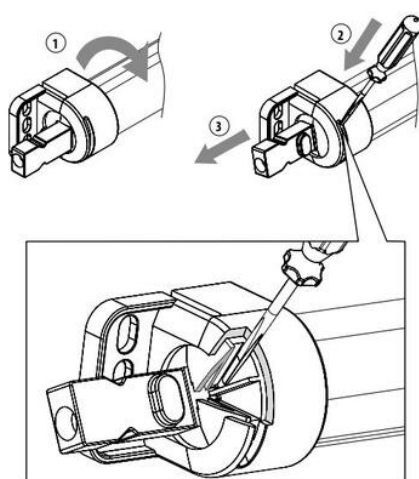
The LED 021/022 Varioline lamp is a compact and powerful LED lamp for enclosures, with a power consumption of only 11 W/16 W. The LED tube emits more than 1,000/1,700 Lm, illuminating even large enclosures to their full depth and height.

The emitted daylight colour of 6,500 K provides natural and non-fading colour reproduction and in-turn safety for the user. The LED 021/022 is glare free, rotatable 360° and uses Mid-power LEDs giving a service life of 60,000 h.

### SPECIFICATIONS

<b>Activation</b>	IR sensor
<b>Approvals</b>	CE, RoHS
<b>Approvals pending</b>	UL, VDE
<b>Color</b>	Translucent/White
<b>Frequenze</b>	50/60 Hz
<b>Height</b>	44 mm
<b>Humidity Storage</b>	<90% RH
<b>IP Class</b>	IP20
<b>Length</b>	600 mm
<b>Light source</b>	LED
<b>Material of body</b>	Plastic
<b>Mounting</b>	Screw fixing

<b>Nominal voltage</b>	100-240 V AC
<b>Operating Humidity</b>	< 90% RH
<b>Operational Temperature</b>	-30°C ... +40°C
<b>Power Consumption</b>	16 W
<b>Protection Class</b>	II (double insulated)
<b>Storage temperature</b>	-40°C ... +85°C
<b>Weight</b>	0.3 kg
<b>Width</b>	44 mm
<b>Voltage max</b>	265 V ac
<b>Voltage min</b>	90 v ac



LED 021 (Size 1)  
L1 = 400 mm  
L2 = 375 mm

LED 022 (Size 2)  
L1 = 600 mm  
L2 = 575 mm



View of screw fixing

