

PHOXI 3D-SENSOR

PHOXI XS
3D Scanner XS

- Resolution up to 3,2M 3D point
- Gigabit Ethernet interface
- Factory calibrated, easy to integrate
- Light and durable carbon body
- Low temperature expansion coefficient



PRODUCT DESCRIPTION

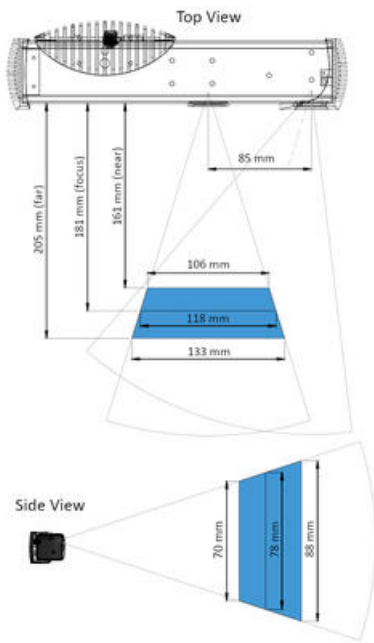
Photoneo develops advanced 3D scanners based on the NVIDIA Pascal Architecture GPU with 256 CUDA cores.

The PhoXi series is available in five different sizes, which means that there is a scanner for all types of applications. With a user-friendly API, you can quickly and easily set up and adapt it for your particular application. PhoXi uses the "advanced structured light approach" which allows it to scan all types of surfaces.

- Absolute accuracy = The precision of point measurement
- Z-noise = Noise in depth
- Frame rate = Max number of frames per second
- Data acquisition time = How long it takes to collect data. It depends on, among other things, the lighting conditions or whether it is a shiny object or not.
- 3D points throughput = The number of 3D points that can be created when doing a sequential scan
- Point size = The distance between two measurement points

SPECIFICATIONS

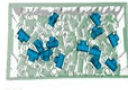
Calibration accuracy (1 σ)	0.035 mm
DC input	PoE & 24V
Depth	68 mm
Height	77 mm
IP Class	IP65
Optimal scanning distance	181 mm
Point to point distance	0.055 mm
Scanning area at sweet spot	118 x 78 mm
Scanning range max	205 mm
Scanning range min	161 mm
Scanning time	250 – 2000 ms
Temporal noise (1 σ)	0.03 mm
Weight	900 g
Width	296 mm



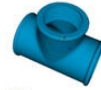
1 LAGGA IN 3D-MODELL



2 SCANNA EN 3D-BILD



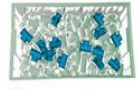
3 FÅ UT KÖRORDNAN FÖR PLACERBARA ÖBJEKT



1 LAGGA IN 3D-MODELL



2 SCANNA EN 3D-BILD



3 FÅ UT KÖRORDNAN FÖR PLACERBARA ÖBJEKT