

## MHK5 ABSOLUTE HOLLOW SHAFT ENCODER

MHK515-PROF-001

Absolute encoder, ø58, ø15, Profibus

- Diameter 58mm, bore 15mm
- Resolution (Max): 13x16 bits
- CANopen, DeviceNet, Ethercat, Ethernet/IP, Interbus, Modbus, Parallel, Profibus, Profinet
- IP64



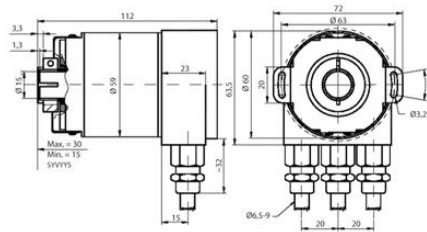
### PRODUCT DESCRIPTION

### SPECIFICATIONS

<b>Sensor type</b>	Absolute
<b>Housing diameter</b>	58 mm
<b>Shaft Diameter</b>	15 mm
<b>Connection Thread</b>	Screw terminal
<b>IP Class</b>	IP64
<b>Speed max.</b>	6000 rpm
<b>Supply Voltage DC Min</b>	10 V DC
<b>Supply Voltage DC Max</b>	30 V DC
<b>Temperature range from</b>	-40 °C
<b>Temperature range to</b>	85 °C
<b>Output</b>	Profibus
<b>Version</b>	Multiturn

#### PROGRAMMABLE PARAMETERS

Operating Parameters	This parameter determines the counting direction, in which the output code increases or decreases. As an important operating parameter the code sequence (complement) can be programmed.
Resolution per turn	Value between 1 and 8192 can be programmed.
Total resolution "Max range"	This parameter is used to program the desired number of measuring units over the total measuring range. This value may not exceed the total resolution of the absolute rotary encoder.
Preset Value	The preset value is the desired position value, which should be reached at a certain physical position of the axis.
Limit Switch, Min. and Max.	Two position values can be programmed as limit switches. By reaching these values one bit of the 32 bit process value is set to high level.
Com	One free programmable com can be set in the total measuring range.



**PROGRAMMABLE PARAMETERS**

Operating Parameters	This parameter determines the counting direction, in which the output code increases or decreases. As an important operating parameter the code sequence (Complement) can be programmed.
Resolution per turn	Value between 1 and 8192 can be programmed
Total resolution "Max range"	This parameter is used to program the desired number of measuring units over the total measuring range. This value may not exceed the total resolution of the absolute rotary encoder.
Preset Value	The preset value is the desired position value, which should be reached of a certain physical position of the shaft.
Limit Switch, Min. and Max.	Two position values can be programmed as limit switches. By reaching these values one bit of the 32 bit process value is set to high level.
Cam	One free programmable cam can be set in the total measuring range.

