

## CASTELL GATESAFE

### GATESAFE



- Emergency exit device for MAI and MAIE interlocks
- 2 NC + 1 NO contacts
- Robust design



### PRODUCT DESCRIPTION

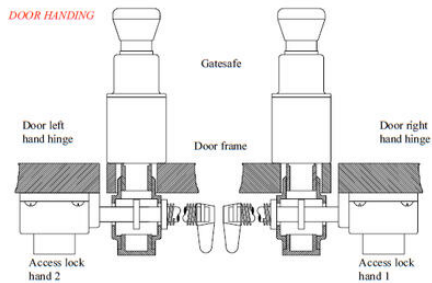
The Gatesafe is an emergency exit device that can be fitted to left & right hand hinged doors and should be used in conjunction with the Castell access locks, the MAI, AI, MAIE & AIE.

The Gatesafe is complete with an emergency stop button that can be depressed to both isolate the supply voltage and allow emergency exit from the area.

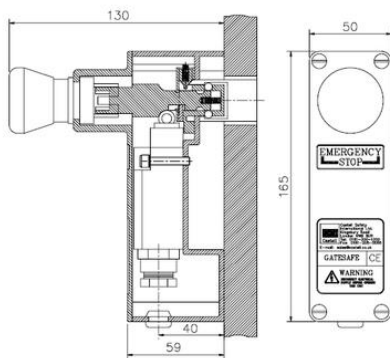
The switch contact arrangement of 2N/C 1N/O make it suitable for category 4 safety applications where cross monitoring is required. These features make it particularly suitable for full body access areas where personnel safety keys are not deployed. The Gatesafe is designed to operate as part of an access control system.

### SPECIFICATIONS

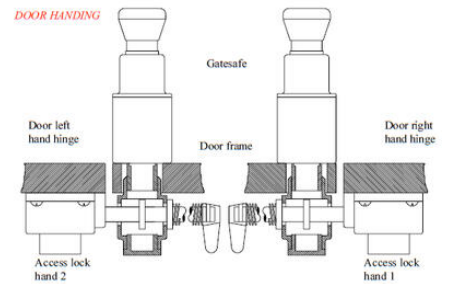
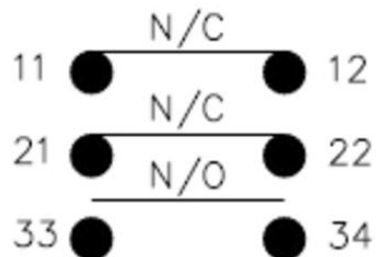
<b>Approvals</b>	CE, CSA, UL
<b>Contact Current Max</b>	6 A
<b>Contact Voltage Max</b>	400 V
<b>IP Class</b>	IP65
<b>Material Protection</b>	Aluminium
<b>Materials Locks</b>	Stainless steel
<b>Temperature ambient from</b>	-25 °C
<b>Temperature ambient to</b>	140 °C
<b>Weight</b>	2,5 kg



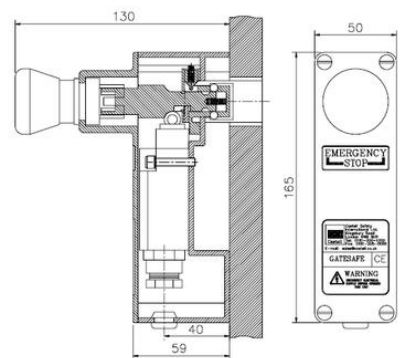
## GATESAFE



## SWITCH CONTACTS



## GATESAFE



## SWITCH CONTACTS

