

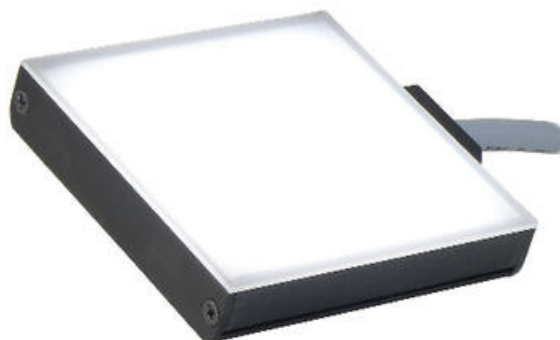
ADVANCED ILLUMINATION - BL128 EXPANDABLE SERIES

Back Lit Low Profile Backlights

SERIE-BL128
BL128 backlight



- Edge to edge back lighting in a 12mm (.48") thick housing
- 2" wide, expandable in 1" increments; Lengths from 1" - 14"
- Optional washdown version offers IP65 compliant design



PRODUCT DESCRIPTION

The BL128 series is expandable in 1" increments up to 14.4", with optional washdown version that is IP65 compliant. The BL series of compact Backlights provide edge to edge illumination in a 12mm thick housing.

Power options include:

- C1 connector - for use with DCS series controllers
- C5 connector - for use with Pulsar 320 strobe controller
- Continuous in-line controller - powered by 24V power supply
- Combination strobe/continuous in-line controller - powered by 24V power supply
- Default-OFF strobe/continuous in-line controller - powered by 24V power supply

For enquiries or quotes for sizes and power options not listed here please [contact us](#).

SPECIFICATIONS

Approvals	CE, RoHS
Feed	C1, C5, IC, I3, I3S
IP Class	IP64
Life Span	50000 h
Temperature range from	0 °C
Temperature range to	60 °C
Wave-Length	WHI, 470, 520, 660, 880

