

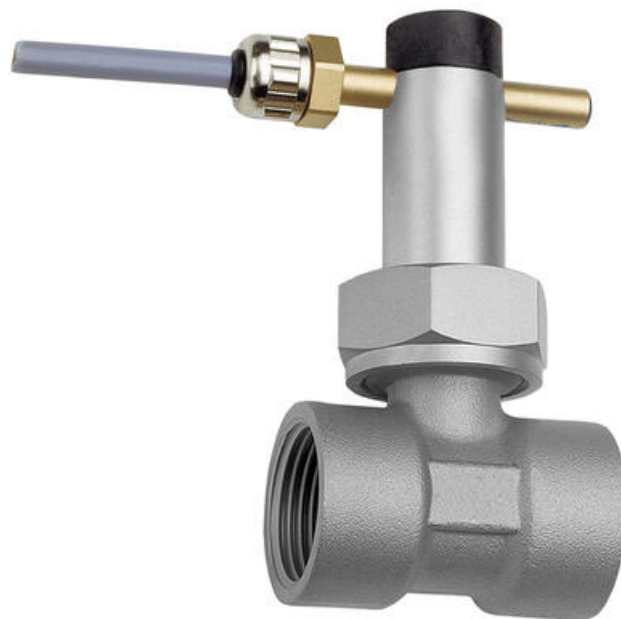
HONSBERG - UR1 SERIES FLOW SWITCH

Paddle

UR1-010GM

Flow sw. 3-3.5 l/min.G3/8

- Switching range 1,3..35 l/min
- Water (oils, gases and aggressive media available on request)
- G $\frac{3}{8}$ " up to G2"
- Brass or stainless steel wetted parts
- Max pressure 25 bar



PRODUCT DESCRIPTION

The Honsberg UR1 is a simple flow switch which can easily be adjusted and also changed from normally open to normally closed. The flow switch works via a spring-supported paddle which moves according to the flow and when the specific flow is reached a magnetic reed switch is activated.

SPECIAL VERSIONS

- Plastic materials
- Weld/solder connection
- High volume OEM version
- Ex
- Switching ranges for oil or gas
- Special values
- High volume OEM version
- PVC (solder fitting)

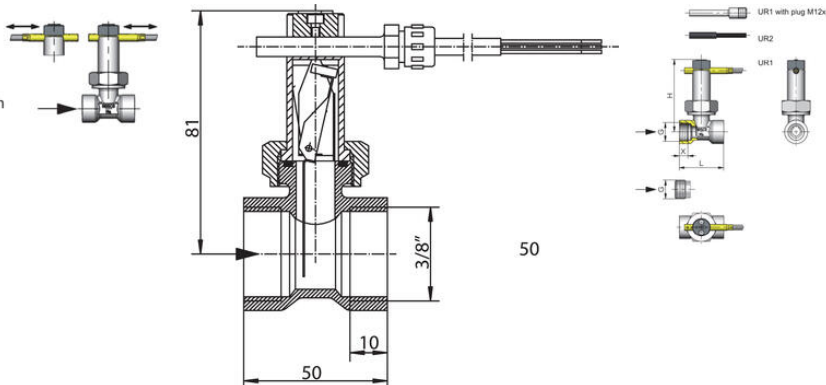
SPECIFICATIONS

| | |
|-------------------------------|---|
| Contact Rating Max | 50 A |
| Flow Max l/min Double | 10 l/min |
| IP Class | IP65 |
| Material breaker body | Hard ferrite |
| Material of body | Nickel-plated brass, Stainless steel 303 |
| Material of connection | Nickel-plated brass |
| Material of seals | NBR |
| Materials Paddle | Stainless steel 301 |
| Materials Wetted Parts | Nickel-plated brass, Stainless steel, Hard ferrite, NBR |

| | |
|---------------------------------|---------------|
| Pressure Range Max | 25 bar |
| Temperature range of media from | 20 °C |
| Temperature range of media to | 110 °C |
| Type of flow component | Flow Switches |
| Weight | 0,35 kg |
| Viscosity | 1 cSt |
| Voltage AC max | 230 V |

Adjustment

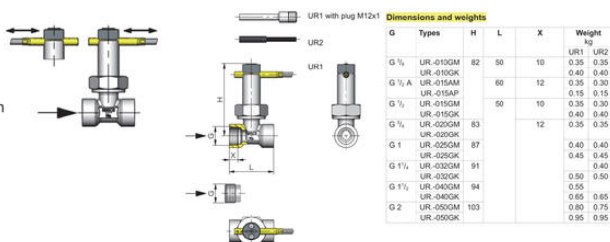
UR1 - loosen bolts, push the switching current tube into the desired position. Retighten the bolts.
Normally closed (n.c.) or normally open (n.o.) as per table "Technical data"



| Dimensions and weights | | | | | |
|------------------------|----------|-----|----|----|--------------|
| G | Types | H | L | X | Weight kg |
| G 1/4 | UR-010GM | 82 | 50 | 10 | UR1 0.35 |
| | UR-010GK | | | | UR2 0.40 |
| | UR-015AM | 60 | 12 | | 0.35 0.30 |
| | UR-015AP | | | | 0.15 0.15 |
| G 1/2 | UR-015GM | 50 | 10 | | 0.35 0.30 |
| | UR-015GK | | | | 0.40 0.40 |
| G 3/4 | UR-020GM | 83 | 12 | | 0.35 0.35 |
| | UR-020GK | | | | 0.40 0.40 |
| G 1 | UR-025GM | 87 | | | 0.45 0.45 |
| | UR-025GK | | | | 0.45 0.45 |
| G 1 1/4 | UR-030GM | 91 | | | 0.50 0.50 |
| | UR-030GK | | | | 0.55 0.55 |
| G 1 1/2 | UR-040GM | 94 | | | 0.65 0.65 |
| | UR-040GK | | | | 0.75 0.75 |
| G 2 | UR-050GM | 103 | | | 0.85 0.85 |
| | UR-050GK | | | | 0.95 0.95 |

Adjustment

UR1 - loosen bolts, push the switching current tube into the desired position. Retighten the bolts.
Normally closed (n.c.) or normally open (n.o.) as per table "Technical data"



| Dimensions and weights | | | | | |
|------------------------|----------|-----|----|----|--------------|
| G | Types | H | L | X | Weight kg |
| G 1/4 | UR-010GM | 82 | 50 | 10 | UR1 0.35 |
| | UR-010GK | | | | UR2 0.40 |
| | UR-015AM | 60 | 12 | | 0.35 0.30 |
| | UR-015AP | | | | 0.15 0.15 |
| G 1/2 | UR-015GM | 50 | 10 | | 0.35 0.30 |
| | UR-015GK | | | | 0.40 0.40 |
| G 3/4 | UR-020GM | 83 | 12 | | 0.35 0.35 |
| | UR-020GK | | | | 0.40 0.40 |
| G 1 | UR-025GM | 87 | | | 0.45 0.45 |
| | UR-025GK | | | | 0.45 0.45 |
| G 1 1/4 | UR-030GM | 91 | | | 0.50 0.50 |
| | UR-030GK | | | | 0.55 0.55 |
| G 1 1/2 | UR-040GM | 94 | | | 0.65 0.65 |
| | UR-040GK | | | | 0.75 0.75 |
| G 2 | UR-050GM | 103 | | | 0.85 0.85 |
| | UR-050GK | | | | 0.95 0.95 |