

HONSBERG - VHS SERIES FLOW METER

Spindle (screw)

VHS025GA00140B

Flow sensor, PNP, 1.4 - 140l/min, G1"

- For oil and lubricating liquids up to 40,000 cSt
- For high flows up to 2500 l/min
- Up to 350 bar pressure
- Light and compact design



PRODUCT DESCRIPTION

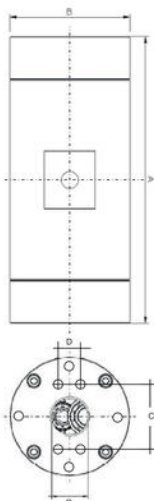
Model VHS is a screw flow sensor designed especially for applications with viscose media and high flows. Has high accuracy regardless of viscosity up to 40,000 cSt and maintains a low sound level under 50dB during operation. All mounting positions are possible and the direction of flow is independent of mounting position.

SPECIFICATIONS

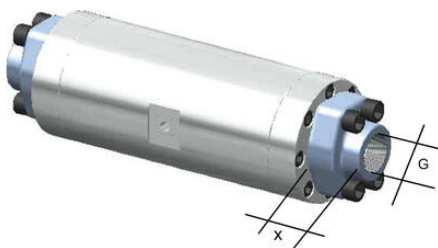
Flow Max l/min Double	200 l/min
Flow Range Max	140 l/min
Flow Range Min	1.4 l/min
IP Class	IP67
Material of connection	Aluminium
Power Consumption	19 mA
Pressure Range Max	160 bar
Repeatability	0.25 %
Temperature range of media from	-25 °C
Temperature range of media to	80 °C
Weight	3.44 kg
Viscosity Max	40000 cSt
Voltage DC max	30 V

Voltage DC min

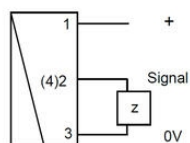
10 V



G"	A mm	B mm	C mm	D mm	X mm	Screw
1"	220	88	57,1	27,8	44	6xM8
1 1/4"	270	100	66,7	31,6	44	8xM8
1 1/2"	320	115	79,4	36,5	51	8xM10
1 3/4"	340	135	79,4	36,5	51	8xM12
2"	400	160	96,8	44,4	70	8xM14
2 1/4"	430	180	96,8	44,4	70	8xM16
2 1/2"	478	210	123,8	58,7	75	6xM20

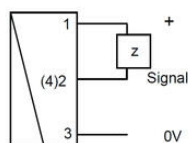


Push pull to PNP



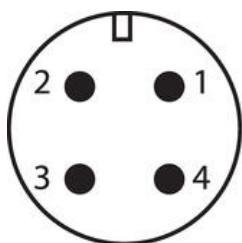
z = load

Push pull to NPN



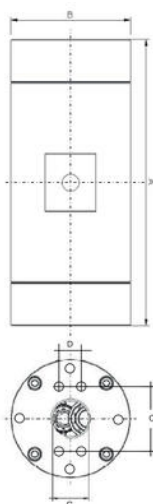
1 +10..30 V DC
2 utsignal
4 0 V

PNP/NPN (DIN 43650-A)

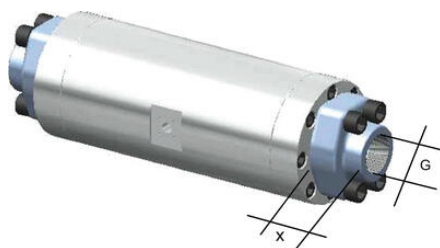


1 +10..30 V DC
3 0 V
4 utsignal

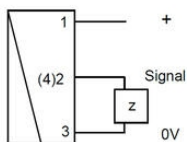
4-20 mA (M12x1-kontakt)



G"	A mm	B mm	C mm	D mm	X mm	Screw
1"	220	88	57,1	27,8	44	6xM8
1 1/4"	270	100	66,7	31,6	44	8xM8
1 1/2"	320	115	79,4	36,5	51	8xM10
1 3/4"	340	135	79,4	36,5	51	8xM12
2"	400	160	96,8	44,4	70	8xM14
2 1/4"	430	180	96,8	44,4	70	8xM16
2 1/2"	478	210	123,8	58,7	75	6xM20

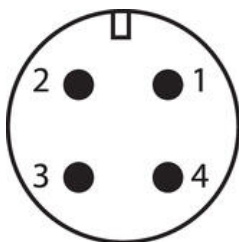
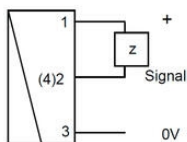


Push pull to PNP



z = load

Push pull to NPN



1 +10..30 V DC
2 utsignal
4 0 V

PNP/NPN (DIN 43650-A)

1 +10..30 V DC
3 0 V
4 utsignal

4-20 mA (M12x1-kontakt)

