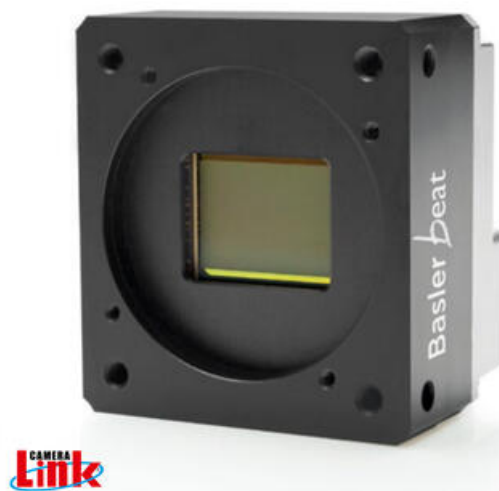


## BASLER BEAT CAMERALINK CAMERAS

### High Resolution

BEA4000-62KM  
Beat CameraLink, CMV12000 1.75" CMOS, 62fps,  
Mono, 12mp

- 12 Mega Pixel
- High speed and Excellent Quality
- Super sensitive CMOS sensor
- More than 60 frames per second
- High speed and Excellent Quality



### PRODUCT DESCRIPTION

The Basler Beat series of cameras offer high resolution, super-sensitive, CMOSIS sensor CMV12000. The image quality achievable with these cameras is comparable with that of CCD sensor cameras and exceeds the image quality offered by older CMOS sensors. Featuring both mono and colour models with progressive scan and global shutter, the Basler Beat camera has a full resolution of 12 megapixels, offering high capture rates and high resolution with superior image quality.

#### Basler Beat Product Features:

- Next-Generation CMOS sensors
- 12 megapixels
- More than 60 frames per second
- Easily integrated due its compact housing
- Basler pylon Camera Software Suite
- Compatible with all common frame grabbers for maximum grabbing speed and high bandwidth connection

#### Examples of application areas:

- Semiconductor manufacturing
- Electronics manufacturing
- ITS (Intelligent Traffic Systems)
- Medical Applications (Medical Imaging)

## SPECIFICATIONS

Sensor model	CMV12000
Resolution	12MP
Resolution Max	4096 x 3072 px
Frame Rate Max	62 fps
Mono/Color	Mono
Shutter type	Global
Pixel size	5.5 x 5.5

<b>Sensor size</b>	1.75"
<b>Approvals</b>	CE, EAC, FCC, GenICam, RoHS, UL
<b>IP Class</b>	IP30
<b>Sensor supplier</b>	ams
<b>Sensor type</b>	CMOS
<b>Lens Barrel</b>	F-mount, M42-mount or M58-mount
<b>Weight</b>	210 g
<b>Length</b>	40 mm
<b>Width</b>	56 mm
<b>Height</b>	62 mm
<b>Power Consumption</b>	6 W
<b>Operating temperature</b>	0°C ... 60°C

