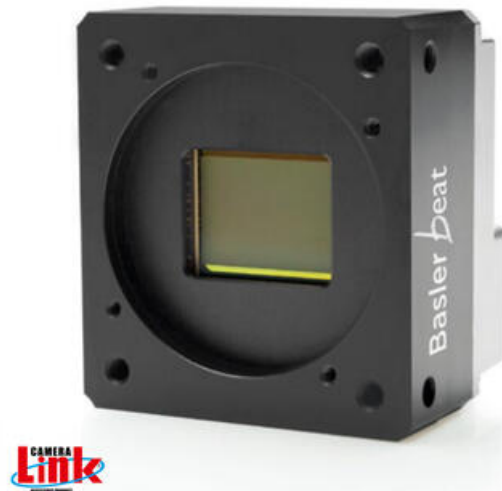


BASLER BEAT CAMERALINK CAMERAS

High Resolution

BEA4000-62KM
Beat CameraLink, CMV12000 1.75" CMOS, 62fps,
Mono, 12mp

- 12 Mega Pixel
- High speed and Excellent Quality
- Super sensitive CMOS sensor
- More than 60 frames per second
- High speed and Excellent Quality



PRODUCT DESCRIPTION

The Basler Beat series of cameras offer high resolution, super-sensitive, CMOSIS sensor CMV12000. The image quality achievable with these cameras is comparable with that of CCD sensor cameras and exceeds the image quality offered by older CMOS sensors. Featuring both mono and colour models with progressive scan and global shutter, the Basler Beat camera has a full resolution of 12 megapixels, offering high capture rates and high resolution with superior image quality.

Basler Beat Product Features:

- Next-Generation CMOS sensors
- 12 megapixels
- More than 60 frames per second
- Easily integrated due its compact housing
- Basler pylon Camera Software Suite
- Compatible with all common frame grabbers for maximum grabbing speed and high bandwidth connection

Examples of application areas:

- Semiconductor manufacturing
- Electronics manufacturing
- ITS (Intelligent Traffic Systems)
- Medical Applications (Medical Imaging)

SPECIFICATIONS

Sensor model	CMV12000
Resolution Max	4096 x 3072 px
Frame Rate Max	62 fps
Mono/Color	Mono
Shutter type	Global
3612_Pixel size (µm)	5.5 x 5.5
Sensor size	1.75"

Approvals	CE, EAC, FCC, GenICam, RoHS, UL
IP Class	IP30
Sensor supplier	ams
Sensor type	CMOS
Lens Barrel	F-mount, M42-mount or M58-mount
Weight	210 g
Length	40 mm
Width	56 mm
Height	62 mm
Power Consumption	6 W
Operating temperature	0°C ... 60°C

