

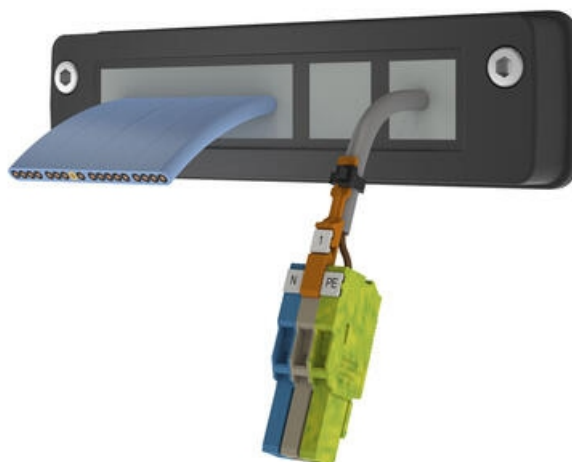
## KDS-FB FLAT CABLE FRAMES

### KDS-FB

28711.4

KDS-SR-FB4/E Frame Black

- Flat & Round Cable Solution
- Compact UL 94-V0, glass-fibre reinforced frame
- Ideal for the Lift, Crane & Forklift Industry
- Large range of Ecolab approved seals
- IP66



### PRODUCT DESCRIPTION

The KDS-FB cable entry system is designed to be used with flat cables commonly used in the forklift, crane and elevator industry.

The compact system provides a highly versatility and time saving solution for managing flat cables which can be tricky to handle.

The "fish skin" on the seals mechanically surrounds the inserted flat cable and they ensure optimum tolerance compensation and IP66 protection.

There is a wide selection of frames which can also take a number of round cables up to 16mm ø from the standard KDS range.

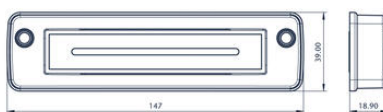
## SPECIFICATIONS

Approvals	cUL, UL
Color	Black
Country of origin	DE

<b>cUL test standard</b>	C22.2 No. 14-95
<b>Diameter of the screw holes</b>	5.5 mm
<b>Fixing screws</b>	M5
<b>Flamklass</b>	V-0
<b>Glass-fibre reinforced</b>	Yes
<b>Halogen free</b>	Yes
<b>Height</b>	18.9 mm
<b>IP Class</b>	IP66
<b>Length</b>	147 mm
<b>Length of cutout</b>	111 mm
<b>Material</b>	Polyamide
<b>Mounting</b>	Screw
<b>NEMA class</b>	4x
<b>Number of screw holes</b>	2
<b>Operating temperature from</b>	-40 °C
<b>Operating temperature to</b>	120 °C
<b>Pack Size</b>	1
<b>Sealing material</b>	Polyurethane-based
<b>Silicone-free</b>	Yes
<b>Tariff code</b>	39259020
<b>Torque of the fixing screws</b>	3
<b>UL test standard</b>	UL 508
<b>Weight</b>	57.5 g
<b>Width</b>	39 mm
<b>Width of cutout</b>	24 mm



Screw for usage: ISO 4762 / DIN 912



Torque for the frame's mounting screw: 3 Nm

