

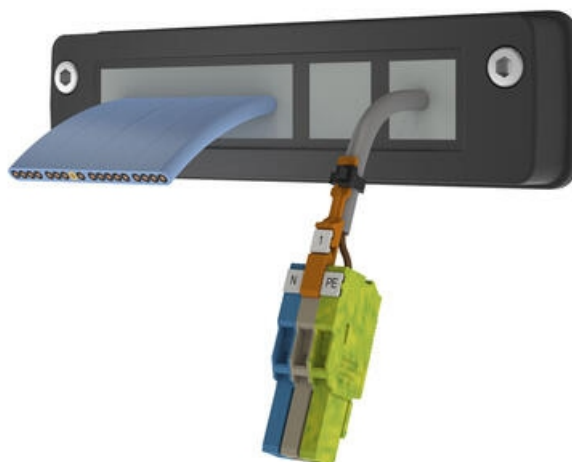
KDS-FB FLAT CABLE FRAMES

KDS-FB

28701.4

KDS-SR-FB2/A Frame Black

- Flat & Round Cable Solution
- Compact UL 94-V0, glass-fibre reinforced frame
- Ideal for the Lift, Crane & Forklift Industry
- Large range of Ecolab approved seals
- IP66



PRODUCT DESCRIPTION

The KDS-FB cable entry system is designed to be used with flat cables commonly used in the forklift, crane and elevator industry.

The compact system provides a highly versatility and time saving solution for managing flat cables which can be tricky to handle.

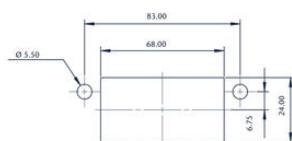
The "fish skin" on the seals mechanically surrounds the inserted flat cable and they ensure optimum tolerance compensation and IP66 protection.

There is a wide selection of frames which can also take a number of round cables up to 16mm ø from the standard KDS range.

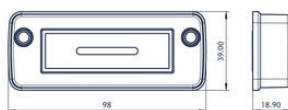
SPECIFICATIONS

Approvals	cUL, UL
Color	Black
Country of origin	DE

cUL test standard	C22.2 No. 14-95
Diameter of the screw holes	5.5 mm
Fixing screws	M5
Flamklass	V-0
Glass-fibre reinforced	Yes
Halogen free	Yes
Height	18.9 mm
IP Class	IP66
Length	98 mm
Length of cutout	68 mm
Material	Polyamide
Mounting	Screw
NEMA class	4x
Number of screw holes	2
Operating temperature from	-40 °C
Operating temperature to	120 °C
Pack Size	1
Sealing material	Polyurethane-based
Silicone-free	Yes
Tariff code	39259020
Torque of the fixing screws	3
UL test standard	UL 508
Weight	40.31 g
Width	39 mm
Width of cutout	24 mm



Screw for usage: ISO 4762 / DIN 912



Torque for the frame's mounting screw: 3 Nm

