

SOCKETS FOR C4 INDUSTRIAL RELAYS

4-pole

S4P
PCB base 14-p

- Both DIN and EN connection numbering
- Semi-protected
- Integrated retaining bow
- Logic connection



PRODUCT DESCRIPTION

Article	S4B	S4L, S4P, S4PO
Fits relay	C4	C4
Description	Screw socket. Rail or screw mount. Logic connection	S4L: Solder socket with attachment lug S4P: Circuit board socket S4L: Solder socket with attachment lug
Connection		
Nominal load	10 A/250 V	10 A/250 V
Isolation conn./conn.	2500 V	2500 V
Isolation conn./rail	2500 V	-
Screw socket, conn.	M3, Pozzi	-
Torque, conn.	1.2 Nm	-
Wiring capacity, connection		
Single conductor	4 mm ² 2x2.25 mm ²	-
Multi-conductor cable	22-14 AWG	-
Material	Cicoloy	Cicoloy
Weight	75 g	12 g

Temperature range -20 °C to +60 °C -20 °C to +60 °C

Approval See separate approval list.

Wiring capacity, connection

Single conductor 4 mm² 2x2.25 mm² -

Multi-conductor cable 22-14 AWG -

Material Cicoloy Cicoloy

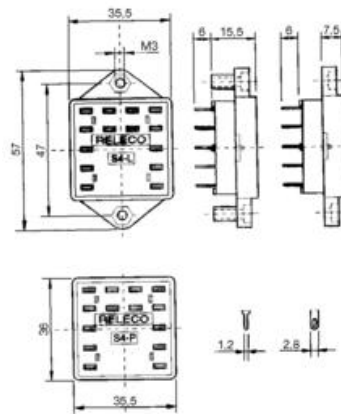
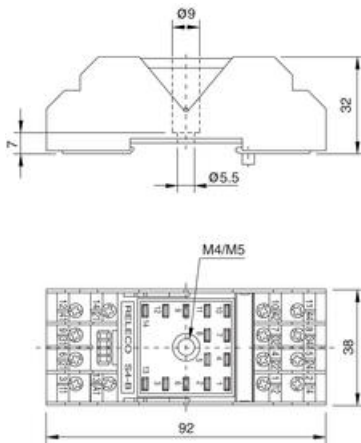
Weight 75 g 12 g

Temperature range -20 °C to +60 °C -20 °C to +60 °C

Approval See separate approval list.

S4B

S4L, S4P, S4PO



PART NUMBERS

Order number	Description
S4B	Screw socket with retaining bow for C4 relays
S4L	Solder socket for C4 relays
S4P	Circuit board socket for C4 relays
S4PO	Circuit board socket with attachment lug for C4 relays
S3C	Retaining bow in metal for C2/C3/C4 relays
S4R	Rear bracket for mounting on DIN rail or screw attachment to
S5R	Flat bracket for screw attachment to C4/C5 relays
S44	Semi-protection for rear bracket S4R for C4/C5 relays
SONP	Black blind test button for C3/C4/C5 relays
SOOP	Orange non-locking test button for C3/C4/C5 relays

SPECIFICATIONS

Switching Capability Voltage	250 V
Breaking Capacity Current	10 A
Temperature range from	-40 °C
Temperature range bearing, from	-30 °C
Temperature range bearing, to	80 °C
Temperature range to	60 °C
Weight	21 g

