

## HONSBERG - LABO XF SERIES FLOW METER

Dynamic diaphragm (flap)

XF-008GMI015

Flow sensor 1/4", 1-15 l/min, 4-20mA

- For liquids up to 16 bar
- Flow from 1 l/min. to 80 l/min.
- Connection from 1/4" to 3/4"
- Housing in PPS or stainless



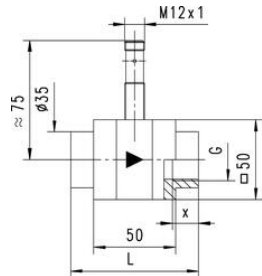
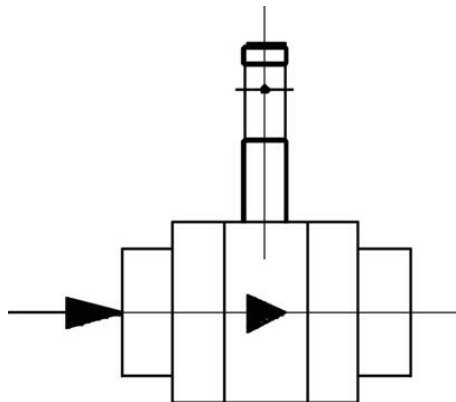
### PRODUCT DESCRIPTION

Model XF is a compact flow sensor in PPS plastic or stainless for water applications. Measurement takes place via a spring mounted metal plate which gives a rapid response time, low pressure drop, and high accuracy. The design with no moving parts makes it suitable for applications where this is a requirement. XF can be simply combined with Honsberg's Omni- or Flex technology.

### SPECIFICATIONS

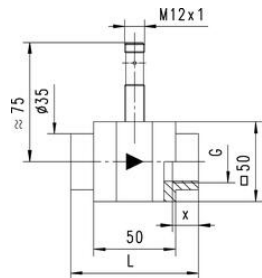
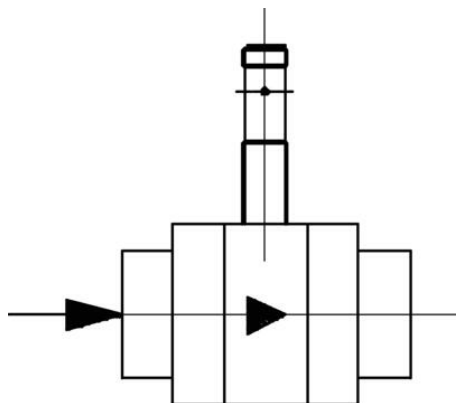
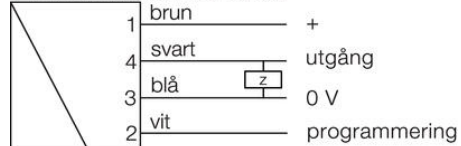
<b>Flow Max l/min Double</b>	120 l/min
<b>Flow Range Max</b>	15 l/min
<b>Flow Range Min</b>	1 l/min
<b>IP Class</b>	IP67
<b>Load Max</b>	100 mA
<b>Material of body</b>	PPS
<b>Material of connection</b>	Nickel-plated brass
<b>Material of seals</b>	Viton
<b>Material tinplate</b>	Stainless steel 1.4031k
<b>Power Consumption</b>	20 mA
<b>Pressure Range Max</b>	16 bar
<b>Temperature range of media from</b>	0 °C
<b>Temperature range of media to</b>	70 °C
<b>Type of flow component</b>	Flow Measuring

<b>Weight</b>	0.35 kg
<b>Viscosity Max</b>	1 cSt
<b>Voltage DC max</b>	30 V
<b>Voltage DC min</b>	10 V



G"	L mm	X mm	Weight kg
1/4	74	12	0,60
3/8	74	12	0,60
1/2	78	14	0,60
3/4	82	16	0,65
1	82		0,70

PNP/ström-/spänning utgång



G"	L mm	X mm	Weight kg
1/4	74	12	0,60
3/8	74	12	0,60
1/2	78	14	0,60
3/4	82	16	0,65
1	82		0,70

PNP/ström-/spänning utgång

